

TECHNICAL BULLETIN

You Tube



NORTEC
PRO >>



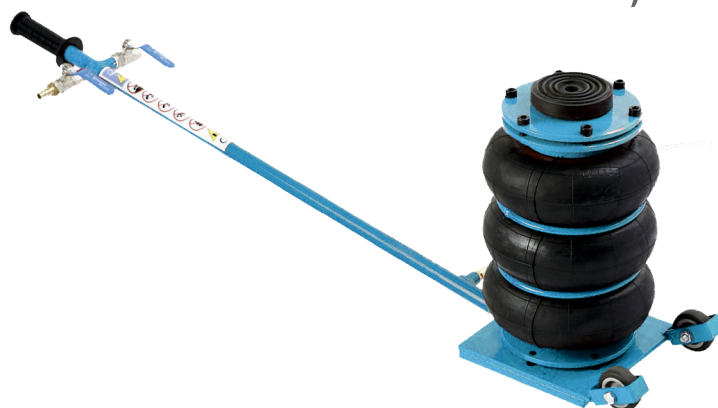
www.nortec-pro.com
infolinia: +48 801 521 522

POLISH
PRODUCT

TL-BA020

2,0T

CAPACITY:	2000 kg
MIN. HEIGHT:	140 mm
MAX. HEIGHT:	320 mm
DIAMETER OF PADS:	190 mm
WORKING PRESSURE:	8 Bar Max.
WORKING TEMPERATURE:	-5 °C - 35 °C
WEIGHT:	10 kg



TL-BA030

3,0T

CAPACITY:	3000 kg
MIN. HEIGHT:	140 mm
MAX. HEIGHT:	380mm
DIAMETER OF PADS:	240 mm
WORKING PRESSURE:	8 Bar Max.
WORKING TEMPERATURE:	-5 °C - 35 °C
WEIGHT:	20 kg



TL-BA045

4,5T

CAPACITY:	4500 kg
MIN. HEIGHT:	140 mm
MAX. HEIGHT:	380 mm
DIAMETER OF PADS:	340 mm
WORKING PRESSURE:	8 Bar Max.
WORKING TEMPERATURE:	-5 °C - 35 °C
WEIGHT:	23 kg



TL-BA080

8,0T

CAPACITY:	8000 kg
MIN. HEIGHT:	140 mm
MAX. HEIGHT:	380 mm
DIAMETER OF PADS:	440 mm
WORKING PRESSURE:	8 Bar Max.
WORKING TEMPERATURE:	-5 °C - 35 °C
WEIGHT:	30 kg





YouTube
WB220

Scan and see more!

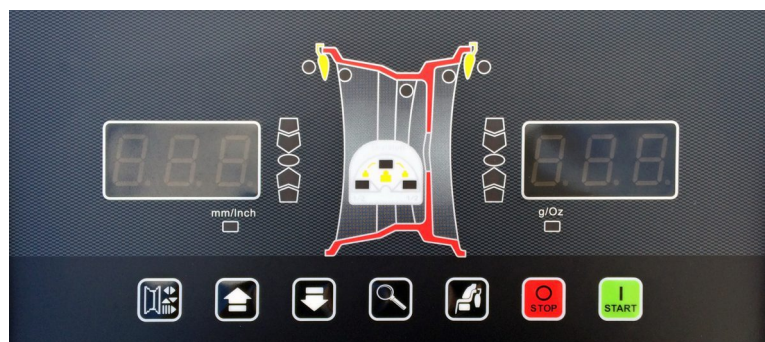


POWER SUPPLY:	230V/50Hz
POWER CONSUMPTION:	180 W
MAX. WHEEL WEIGHT:	65 kg
RIM DIAMETER:	10" - 24"
RIM WIDTH:	1,5" - 20"
SHAFT DIAMETER:	36 mm
ACCURACY:	1 g
BALANCING TIME:	8 s
NOISE LEVEL:	< 70 dB (A)
WORKING TEMPERATURE:	5-50 °C
WEIGHT:	60 kg

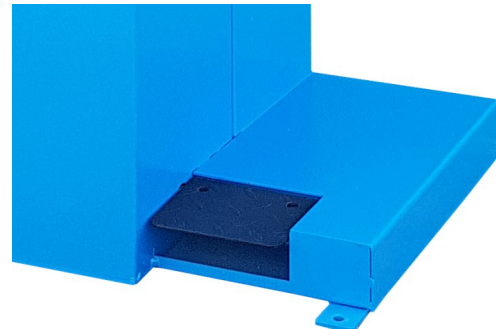
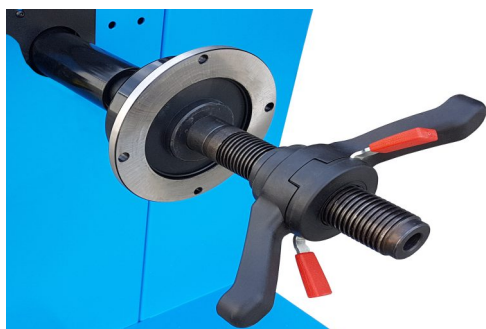
STANDARD EQUIPMENT



CONTROL PANEL



Balancer designed for balancing wheel of cars & light truck ♦ automatic wheel distance measurement from balancing machine and rim diameter using a retractable measuring cup ♦ measurement hand wheel width ♦ active protective hood, automatic wheel braking, static, dynamic and ALU programs ♦ quick optimization function, split unbalance and hide weights behind shoulders of the rim ♦ units can be changed: inch / millimeter and gram / unit, self-diagnosis and calibration program.





YouTube

WB300

Scan and see more!

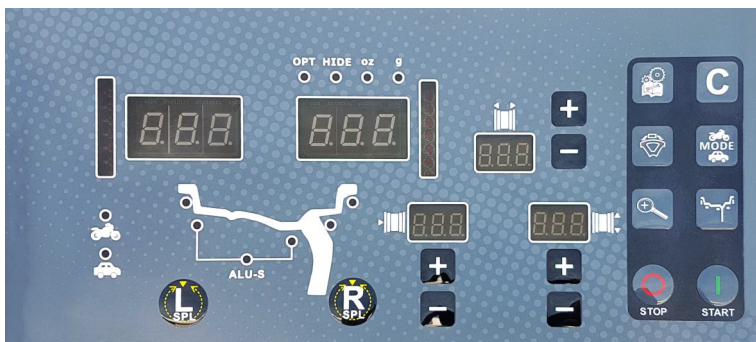


POWER SUPPLY:	230V/50Hz
POWER CONSUMPTION:	180 W
MAX. WHEEL WEIGHT	65 kg
RIM DIAMETER:	10" - 24"
RIM WIDTH:	1,5" - 20"
SHAFT DIAMETER:	40 mm
ACCURACY:	1 g
BALANCING TIME:	8 s
NOISE LEVEL:	< 70 dB (A)
WORKING TEMPERATURE:	5-50 °C
WEIGHT:	60 kg

STANDARD EQUIPMENT

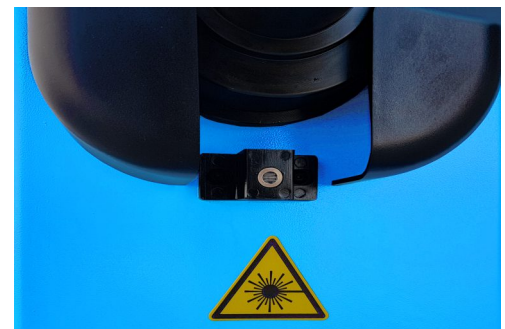
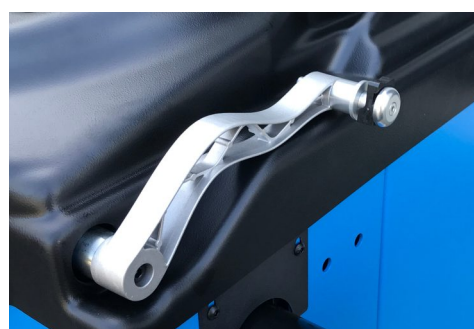
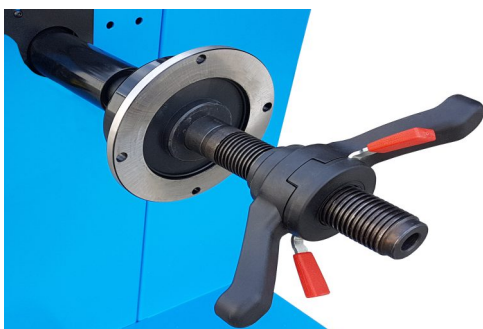


CONTROL PANEL



Balancing machine designed for balancing passenger car wheels and light truck

- ♦ automatic wheel distance measurement from balancing machine and rim diameter using a retractable measuring cup
- ♦ measurement automatic wheel width
- ♦ automatic wheel positioning
- ♦ active protective hood, automatic wheel braking, programs: static, dynamic and ALU
- ♦ electric brake
- ♦ display on the LEDs
- ♦ quick optimization function, unbalance sharing and hiding weights behind the shoulders of the rim
- ♦ the ability to change units: inch / millimeter and gram / gram, auto-diagnosis and calibration program.





YouTube

WB600

Scan and see more!

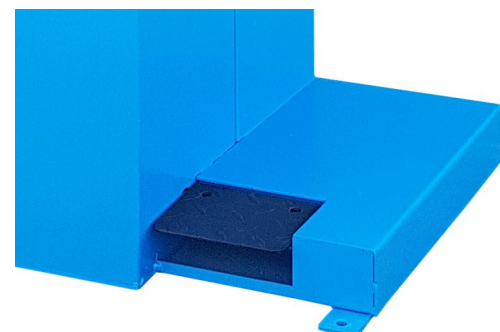
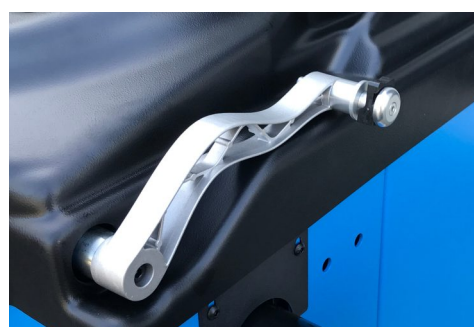


CAPACITY:	230V/50Hz
POWER CONSUMPTION:	180 W
MAX. WHEEL WEIGHT:	65 kg
DIM DIAMETER:	10" - 24"
RIM WIDTH:	1,5" - 20"
SHAFT DIAMETER:	40 mm
ACCURACY:	1 g
BALANCING TIME:	8 s
NOISE LEVEL:	< 70 dB (A)
WORKING TEMPERATURE:	5-50 °C
WEIGHT:	60 kg

STANDARD EQUIPMENT



The balancing machine is designed for balancing passenger car and light trucks ♦ monitor LCD 20" ♦ point laser pointer weight positioning ♦ automatic measurement wheel distance from the balancer, rim diameter and width ♦ active protective hood ♦ automatically wheel braking ♦ footbrake ♦ static, dynamic and ALU program ♦ quick optimization function, split unbalance and hide weights behind the rim arms ♦ possibility unit changes: inch / millimeter and gram / oz, self-diagnosis and calibration program.



TC20



POWER SUPPLY:	230V/50Hz
MOTOR POWER:	1,10 kW
PNEUMATIC SUPPLY:	8-10 bar
EXTERNAL RANGE:	10" - 17"
INTERNAL RANGE:	12" - 20"
BEAD BRAKER FORCE:	1400 kg
MAX WHEEL DIAMETER:	1040 mm
MAX WHEEL WIDTH:	14"
NOISE LEVEL:	<70 dB
WEIGHT:	190 kg

STANDARD EQUIPMENT



The tire changer is designed for mounting and dismantling passenger car tires and light truck

- ♦ manually tilted arm
- ♦ Manually locked position head
- ♦ Self-centering 4-jaw handle
- ♦ Additional pedal to facilitate work with a breaker
- ♦ Standard equipment with accessories for aluminum wheels
- ♦ Air preparation unit with pressure control
- ♦ Pistol with pressure gauge.



YouTube

MO210AL

Scan and see more!



POWER SUPPLY:	230V/50Hz
MOTOR POWER:	1,10 kW
PNEUMATIC SUPPLY:	8-10 bar
EXTERNAL RANGE:	10" - 21"
INTERNAL RANGE:	12" - 24"
BEAD BREAKER FORCE:	1400 kg
MAX WHEEL DIAMETER:	1040 mm
MAX WHEEL WIDTH:	14"
NOISE LEVEL:	<70 dB
WEIGHT:	270 kg

The tire changer is designed for mounting and dismantling passenger car tires and light trucks ♦ manually tilted arm ♦ Manually locked head position ♦ 4-jaw self-centering chuck ♦ Auxiliary arm for easy assembly / disassembly tire ♦ Air preparation unit with pressure control ♦ Pistol with pressure gauge ♦ bead breaker activated by a pedal or an additional button on the handle.



Pneumatic helping arm

Additional button control

STANDARD EQUIPMENT





YouTube

MO405

Scan and see more!



POWER SUPPLY:	400V/50Hz
MOTOR POWER:	0,75 kW
PNEUMATIC SUPPLY:	8-12 bar
EXTERNAL RANGE:	12" - 22"
INTERNAL RANGE:	14" - 24"
BEAD BRAKER FORCE:	2500 kg
MAX WHEEL DIAMETER:	1100 mm
MAX WHEEL WIDTH:	13"
NOISE LEVEL:	<70 dB
WEIGHT:	324 kg

The tire changer is designed for mounting and dismounting car wheels, light trucks and motorcycles ♦ pneumatically tilted and blocked column ♦ pneumatically locked head ♦ optimal standard equipment ♦ optional helping arm.

STANDARD EQUIPMENT



AL320C
HELPING ARM

MO420



PNEUMATIC SUPPLY:	400V/50Hz
MOTOR POWER:	0,75 kW
PNEUMATIC SUPPLY:	8-12 bar
EXTERNAL RANGE:	12" - 22"
INTERNAL RANGE:	14" - 24"
BEAD BREAKER FORCE:	2500 kg
MAX WHEEL DIAMETER:	1100 mm
MAX WHEEL WIDTH:	13"
NOISE LEVEL:	<70 dB
WEIGHT:	324 kg

The tire changer is designed for mounting and dismounting car wheels, light trucks and motorcycles ♦ pneumatically tilted and locked column ♦ pneumatically locked head ♦ optimal standard equipment ♦ inflator as standard equipment ♦ optional helping arm ♦ 2 table speeds activated by pedal.

STANDARD EQUIPMENT

AL320C
HELPING ARM

MO620



POWER SUPPLY:	400V/50Hz
MOTOR POWER:	0,75 kW
PNEUMATIC SUPPLY:	8-12 bar
EXTERNAL RANGE:	13" - 24"
INTERNAL RANGE:	15" - 26"
BEAD BREAKER FORCE:	2500 kg
MAX WHEEL DIAMETER:	1100 mm
MAX WHEEL WIDTH:	15"
NOISE LEVEL:	<70 dB
WEIGHT:	324 kg

The tire changer is designed for mounting and dismounting car wheels, light trucks and motorcycles ♦ pneumatically tilted and locked column ♦ pneumatically locked head ♦ optimal standard equipment ♦ inflator as standard equipment ♦ optional helping arm ♦ 2 table speeds activated by pedal.

STANDARD EQUIPMENT



AL320D
HELPING ARM



YouTube

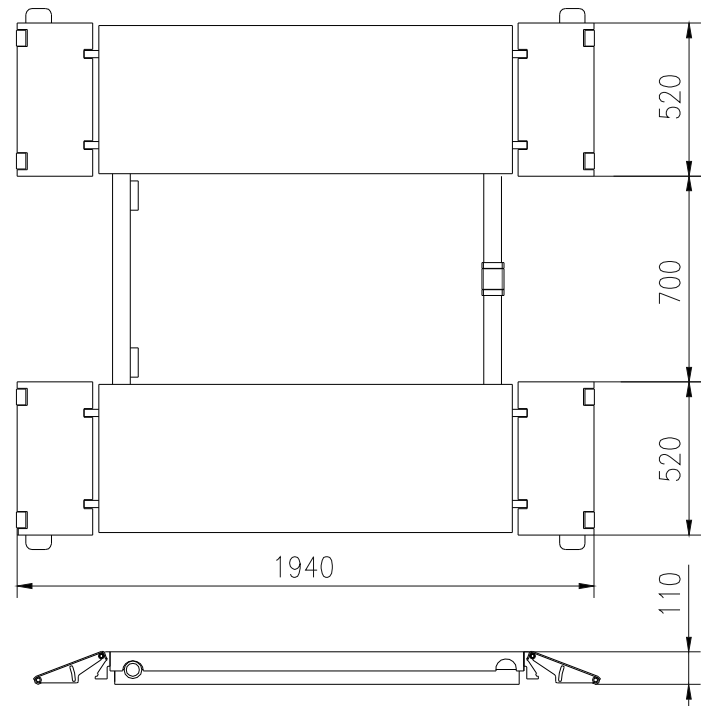
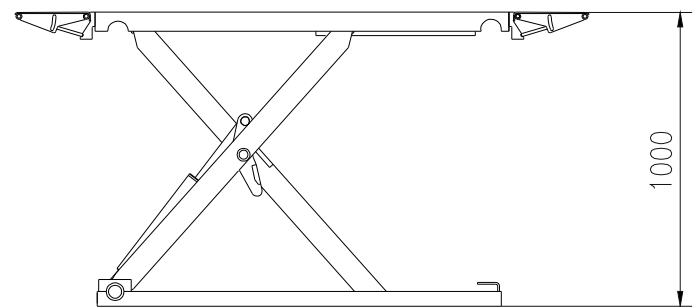
PN3001D

Scan and see more!



CAPACITY:	3000 kg
POWER SUPPLY:	400V/50Hz
PNEUMATIC SUPPLY:	6-8 bar
MOTOR POWER:	2,2 kW
LIFTING HEIGHT:	110-1000 mm
PLATFORM LENGHT:	1400-1900 mm
NOISE LEVEL:	<70 dB
WEIGHT:	550 kg

- Electrohydraulic scissor lift with moving possibility
- stable construction
- mechanical height lock pneumatically released
- mechanically synchronized adjustable platforms
- rubber pads and moving set in standard equipment
- safety appliances in order to EN1493:2010
- oil HL22/32, 10 liters.

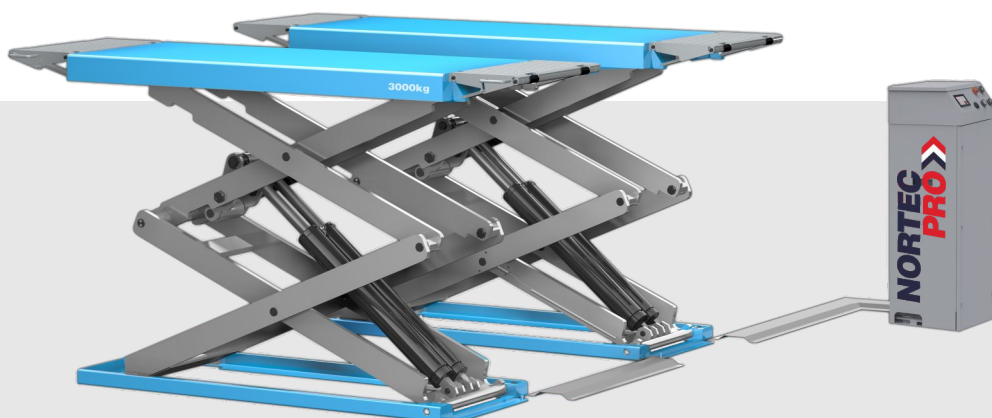


STANDARD EQUIPMENT



MOVING SET
RUBBER PADS, 4 UNITS

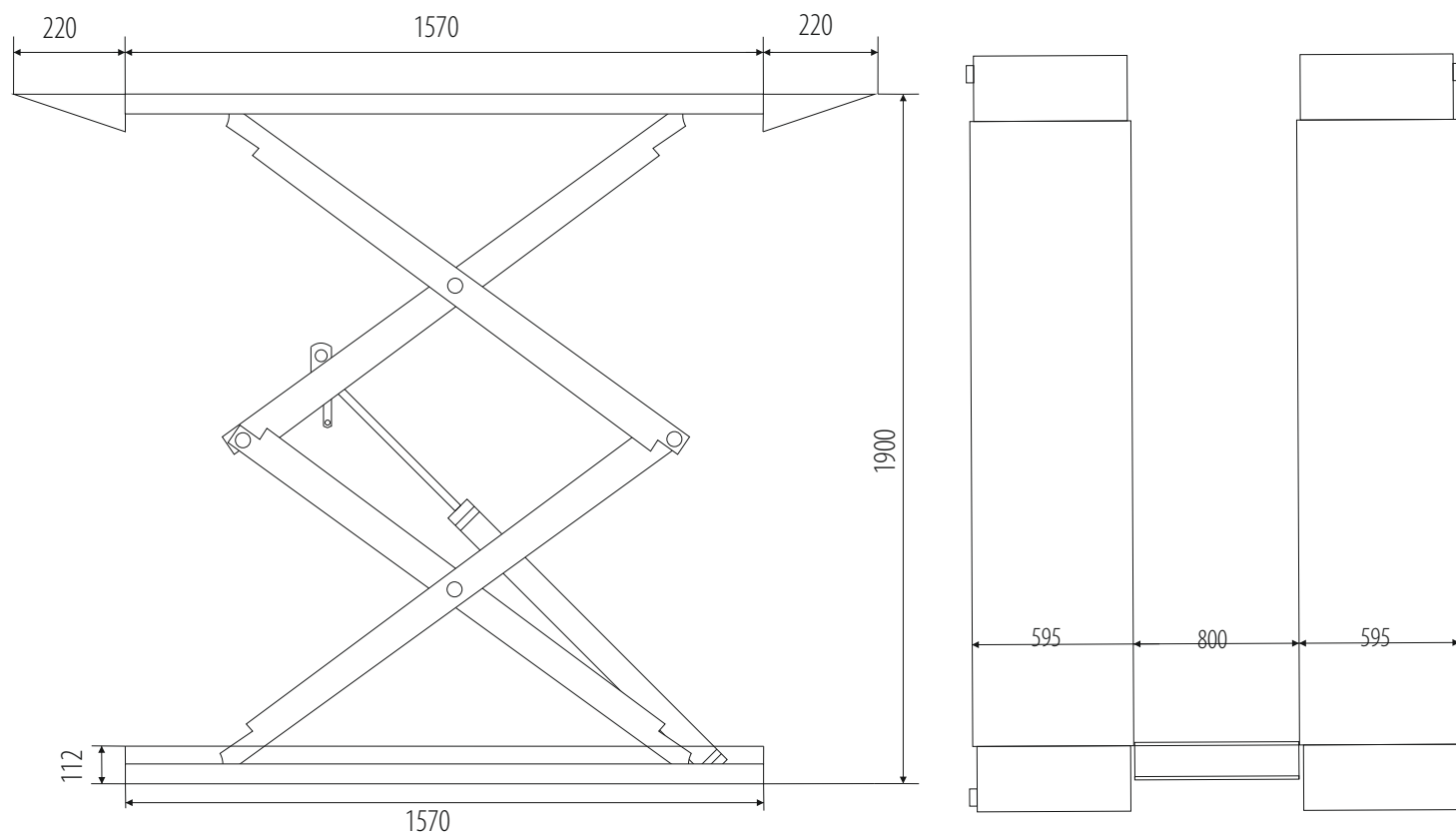
PN3000A



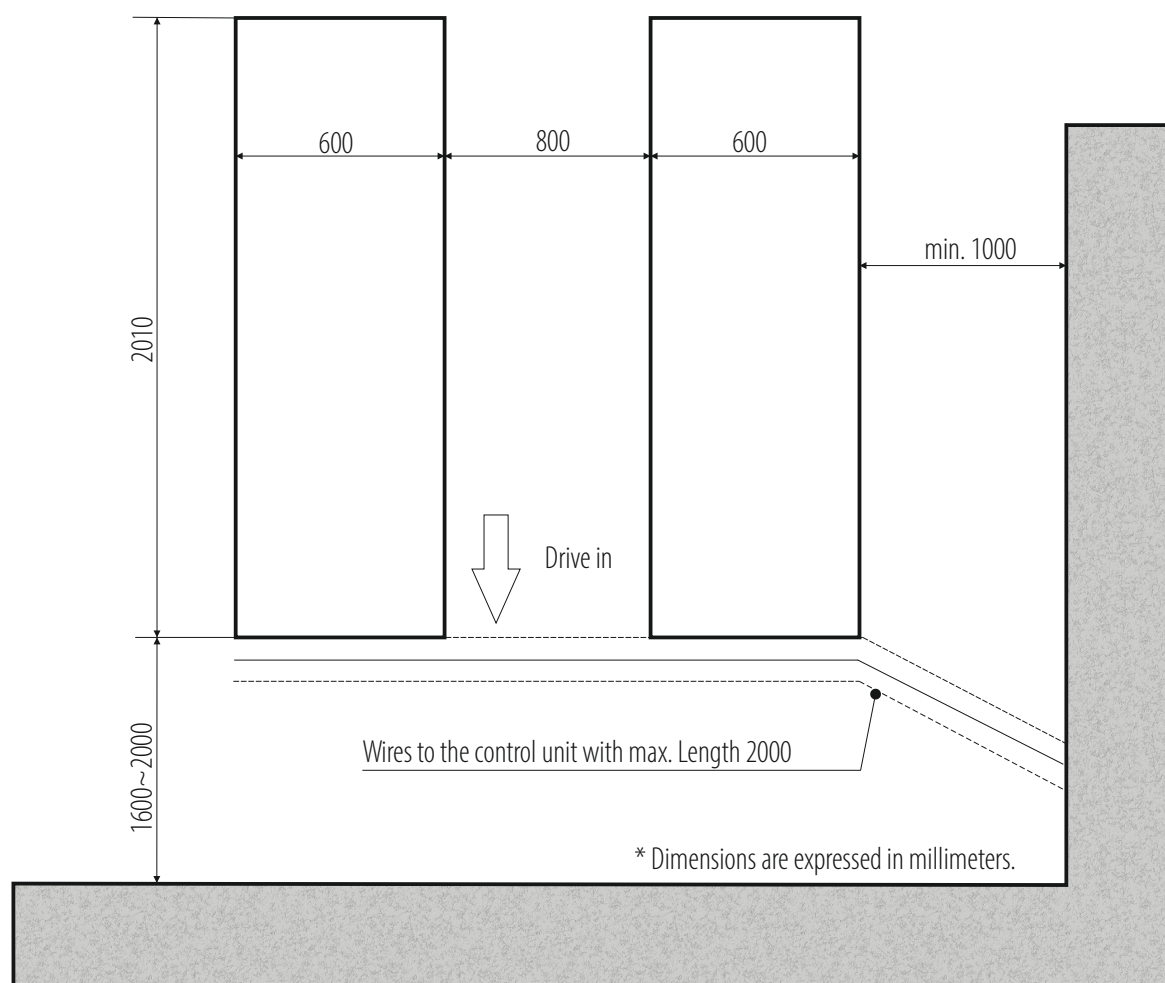
CAPACITY:	3000 kg
POWER SUPPLY:	400V/50Hz
PNEUMATIC SUPPLY:	8 bar max.
MOTOR POWER:	2,6kW
LIFTING HEIGHT:	112-1900 mm
PLATFORMS:	595 x 1570-2000 mm
NOISE LEVEL:	<70 dB (A)
WEIGHT:	830 kg

*REVIEW PICTURE.

Electrohydraulic lift with 4 cylinders, without ratchet, smooth lowering without effect lifting ♦ scissor compact design ♦ a lift designed for mounting on floor (only 112mm high when folded) ♦ safe lift control 24V from an external control box ♦ hydraulic devices to protect against sudden oil leakage or overload ♦ extreme sensor and secure arrangement of platforms ♦ acoustic signal of the final descent phase.



PN3000A



INSTALLATION REQUIREMENTS:



Concrete class: B25 or C20 / 25 with a minimum mounting area: 2210x2200x200mm ♦ Acceptable floor imbalance: +/- 5mm, floor execution: 3 weeks before assembly ♦ Mounting anchors: mechanical M12 / 150 mm 8 pieces or chemical M16 / 250mm ♦ Hydraulic oil: HL32, 16.0l ♦ Power supply: 5x2.5mm cable to the place of assembly ♦ Pneumatic supply: dry and lubricant air, min. 6 bar (max. 8 bar) ♦ Current protection: min. 32A with 3-phase 400V / 50Hz power supply.

Installation allowed only in closed areas ♦ prohibition of using reinforcement 20 cm from the top thicker than 4mm² ♦ assembly for chemical anchors for an additional fee (submit in advance, preferably when setting the date of assembly) ♦ All connections, with particular reference to electrical connections, they must be made by authorized persons ♦ The installation must remain carried out by qualified personnel according to the rules attached in this building plan ♦ In the case of assembly by Nortec or its authorized service center, the lift must be on solid ground.

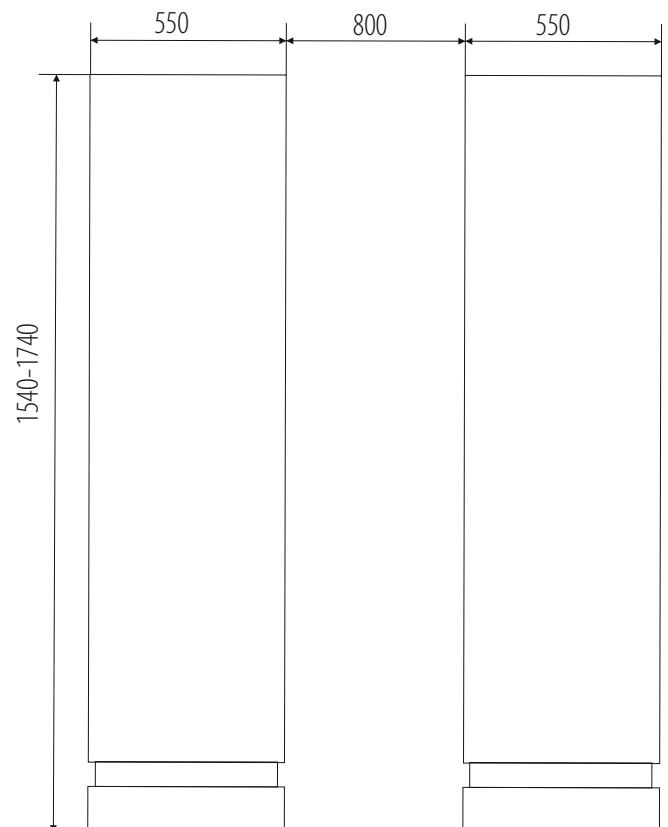
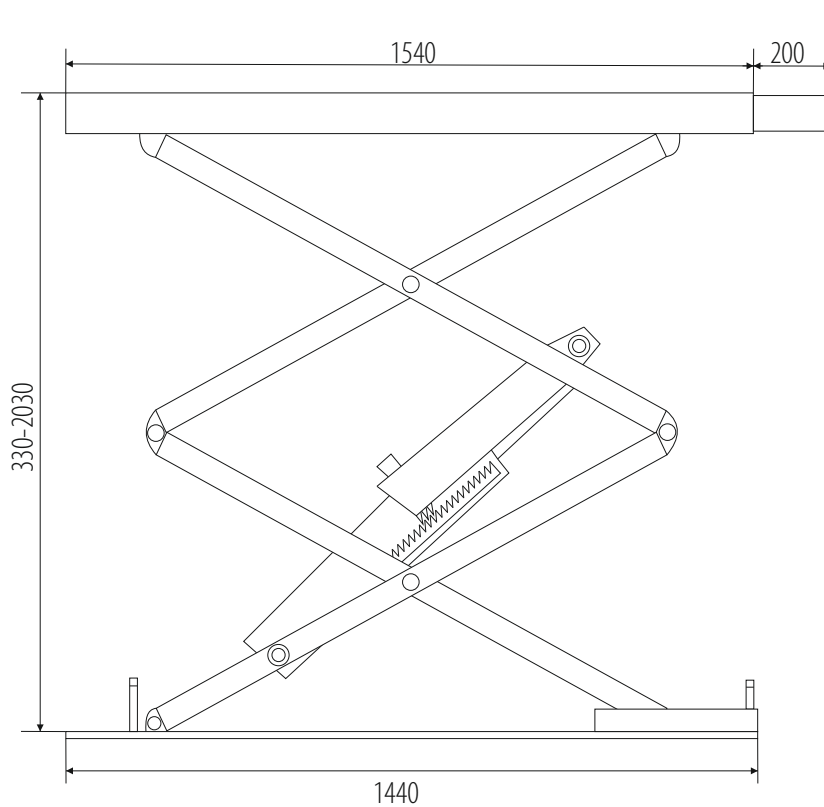
PN3000C



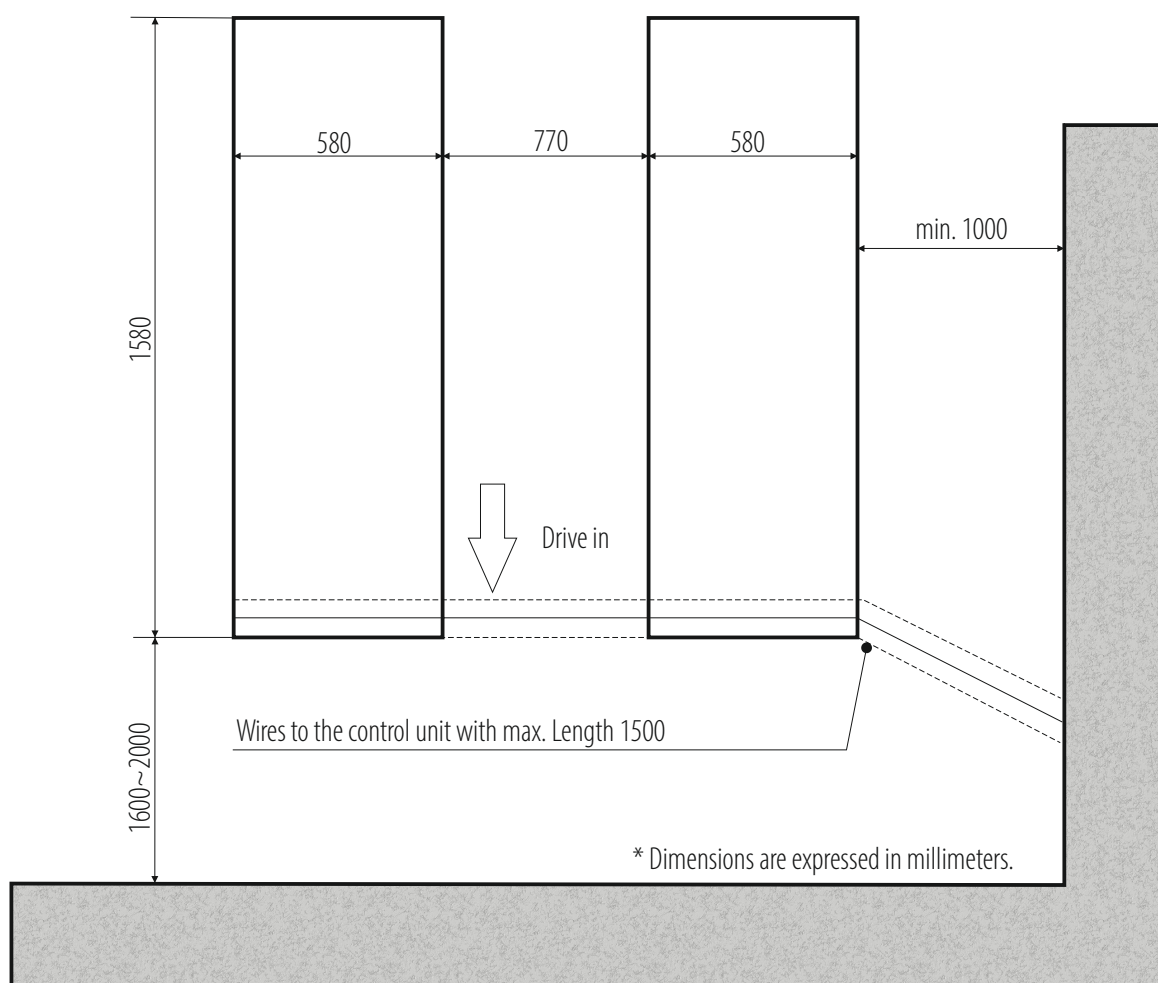
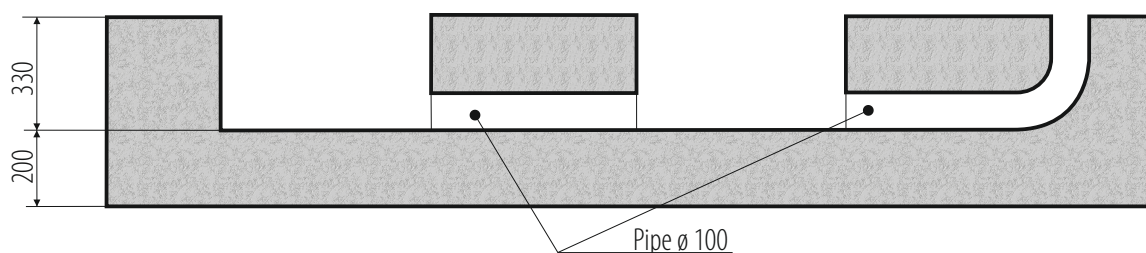
CAPACITY:	3000 kg
POWER SUPPLY:	400V/50Hz
PNEUMATIC SUPPLY:	8 bar max.
MOTOR POWER:	2,6kW
LIFTING HEIGHT:	112-1900 mm
PLATFORMS:	550 x 1540-1740 mm
NOISE LEVEL:	<70 dB (A)
WEIGHT:	830 kg

*REVIEW PICTURE.

Electrohydraulic lift ♦ pneumatically activated height lock
 ♦ designed for mounting in a moat ♦ safe 24V voltage control
 from the outside of the control box ♦ hydraulic safety devices
 in case of sudden oil leakage or overload ♦ extreme and safe
 sensor platform locations ♦ acoustic signal of the final descent
 phase.



PN3000C



INSTALLATION REQUIREMENTS:



Concrete class: B25 or C20 / 25 with a minimum mounting area: 1780x2060x200mm ♦ Acceptable floor imbalance: +/- 5mm, floor execution: 3 weeks before assembly ♦ Mounting anchors: mechanical M12 / 150 mm 8 pieces or chemical M16 / 250mm ♦ Hydraulic oil: HL32, 16.0l ♦ Power supply: 5x2.5mm cable to the place of assembly ♦ Pneumatic supply: dry and lubricant air, min. 6 bar (max. 8 bar) ♦ Current protection: min. 32A with 3-phase 400V / 50Hz power supply.

Installation allowed only in closed areas ♦ prohibition of using reinforcement 20 cm from the top thicker than 4mm² ♦ assembly for chemical anchors for an additional fee (submit in advance, preferably when setting the date of assembly) ♦ All connections, with particular reference to electrical connections, they must be made by authorized persons ♦ The installation must remain carried out by qualified personnel according to the rules attached in this building plan ♦ In the case of assembly by Nortec or its authorized service center, the lift must be on solid ground.

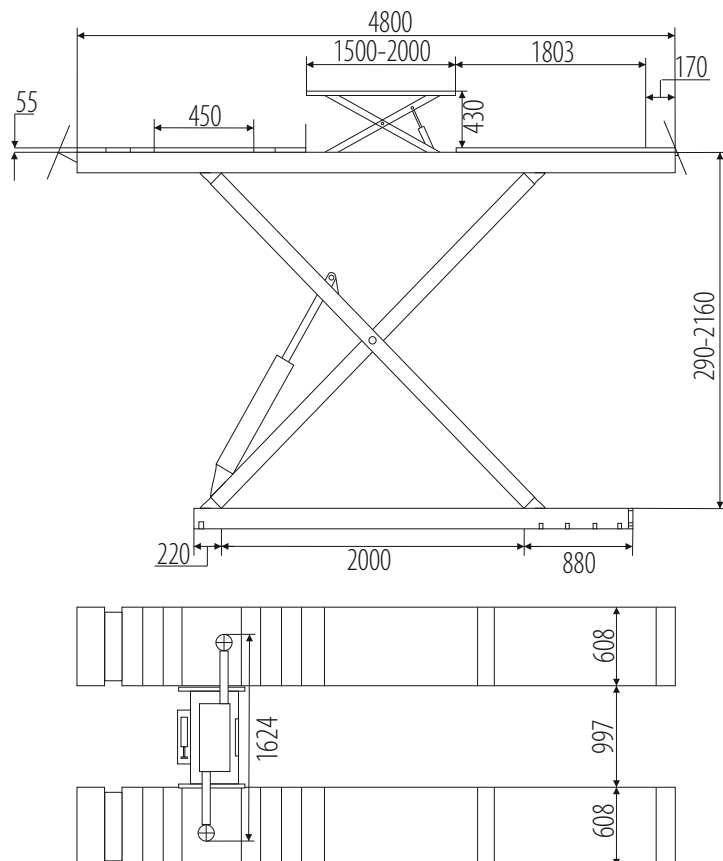
PN400GPB



*REVIEW PICTURE.

CAPACITY:	4000 kg
POWER SUPPLY:	400V/50Hz
PNEUMATIC SUPPLY:	8 bar max.
MOTOR POWER:	2,6kW
LIFTING HEIGHT:	290-2160 mm
PLATFORMS:	608 x 4800 mm
NOISE LEVEL:	<70 dB (A)
WEIGHT:	2510 kg

Electrohydraulic lift for wheel alignments ♦ electrohydraulic axle jacks
 ♦ pneumatically released height lock ♦ long expansion plates, recesses under turntables ♦ lift designed for mounting in a moat or on the floor (after ordering optional invasions) ♦ mechanical, pneumatically releasable height lock, photocell synchronization control ♦ safe control of the lift 24V from the level of the external control box ♦ hydraulic safety devices in the event of a sudden oil leak or overload ♦ extreme and safe sensor platform locations ♦ sound signal of the final descent phase.

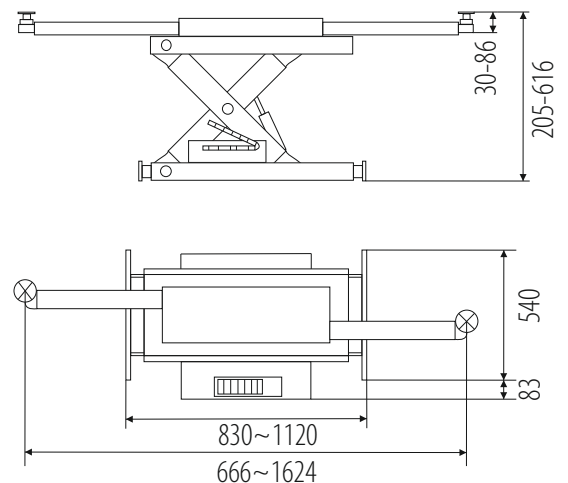


OPTIONAL EQUIPMENT

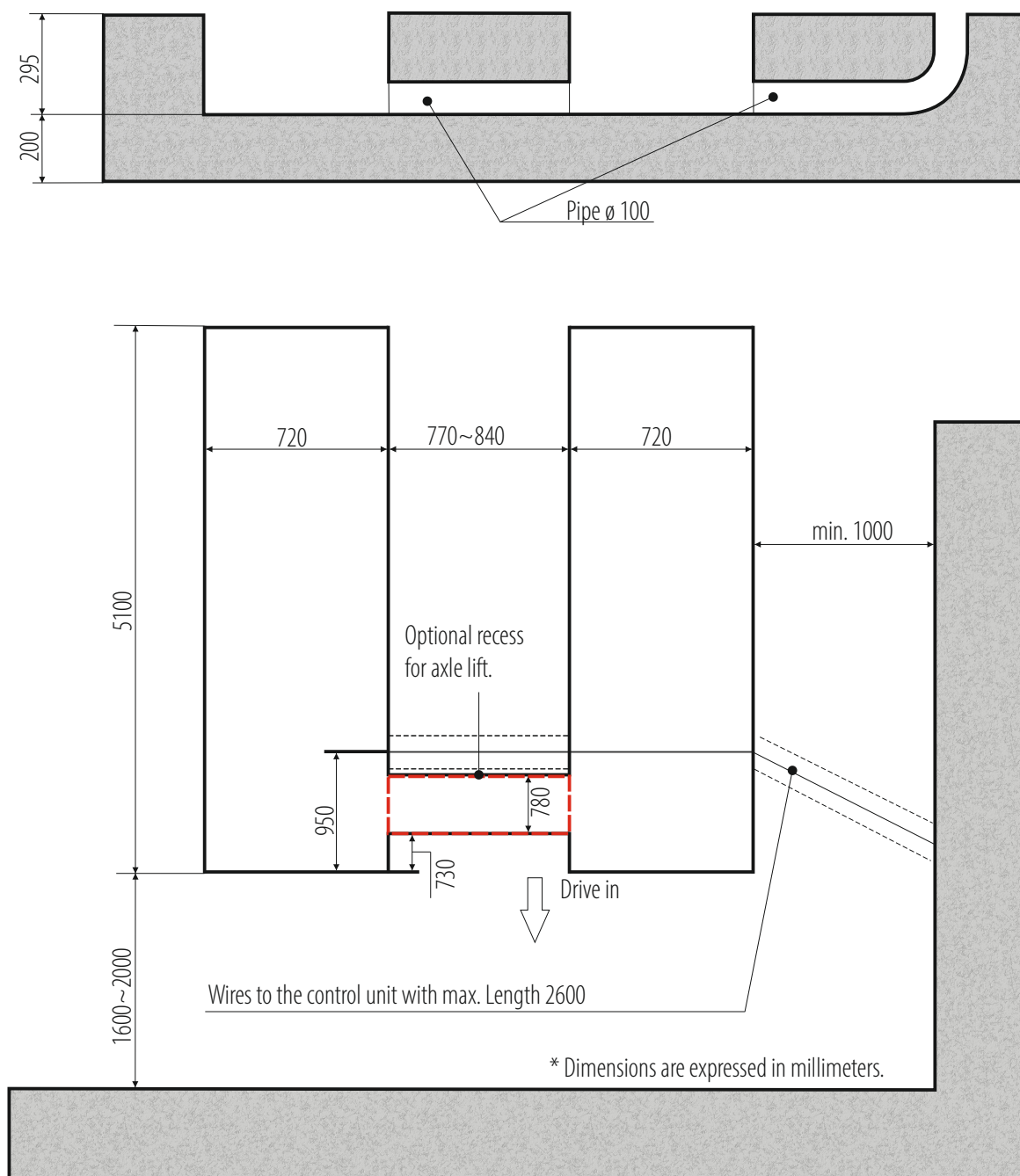
AXLE JACKS XT250H



Axle jacks with a lifting capacity of 2500 kg ♦ hand lever hydraulic pump ♦ adjustable shoulder spacing
 ♦ mechanical height lock ♦ points of support with smooth height adjustment.



PN400GPB



INSTALLATION REQUIREMENTS:



Concrete class: B25 or C20 / 25 with a minimum mounting area: 5300x2480x200mm ♦ Acceptable floor imbalance: +/- 5mm, floor execution: 3 weeks before assembly ♦ Mounting anchors: mechanical M12 / 150 mm 16 pieces or chemical M16 / 250mm ♦ Hydraulic oil: HL32, 18.0l ♦ Power supply: 5x2.5mm cable to the place of assembly ♦ Pneumatic supply: dry and lubricant air, min. 6 bar (max. 8 bar) ♦ Current protection: min. 32A with 3-phase 400V / 50Hz power supply.

Installation allowed only in closed areas ♦ prohibition of using reinforcement 20 cm from the top thicker than 4mm² ♦ assembly for chemical anchors for an additional fee (submit in advance, preferably when setting the date of assembly) ♦ All connections, with particular reference to electrical connections, they must be made by authorized persons ♦ The installation must remain carried out by qualified personnel according to the rules attached in this building plan ♦ In the case of assembly by Nortec or its authorized service center, the lift must be on solid ground.

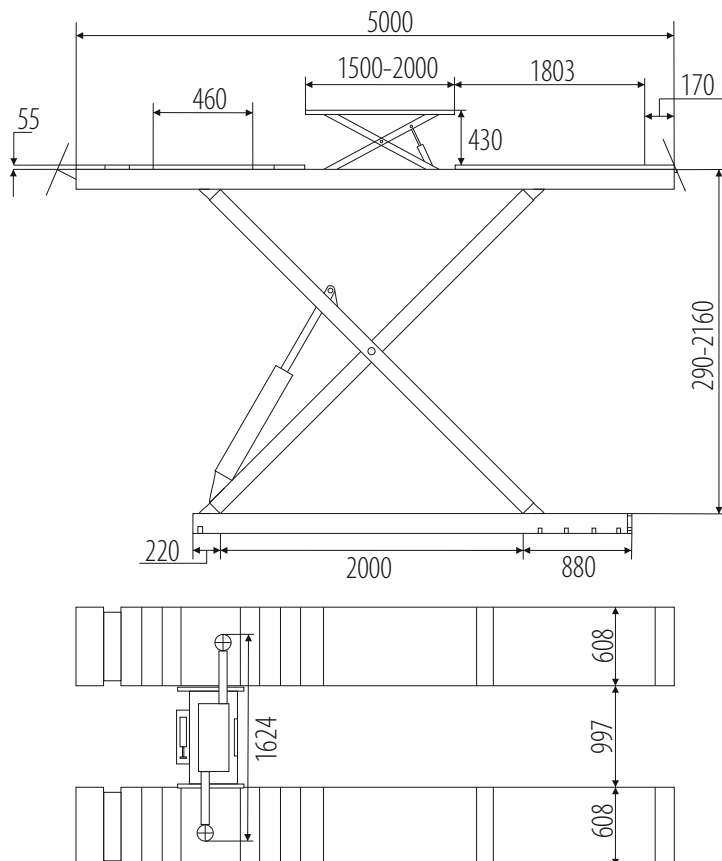
PN500GP



*REVIEW PICTURE.

CAPACITY:	5000 kg
POWER SUPPLY:	400V/50Hz
PNEUMATIC SUPPLY:	8 bar max.
MOTOR POWER:	3,5kW
LIFTING HEIGHT:	290-2160 mm
PLATFORMS:	608 x 5000 mm
NOISE LEVEL:	<70 dB (A)
WEIGHT:	2570 kg

Electrohydraulic lift for wheel alignments ♦ electrohydraulic axle jacks
 ♦ pneumatically released height lock ♦ long expansion plates, recesses under turntables ♦ lift designed for mounting in a moat or on the floor (after ordering optional invasions) ♦ mechanical, pneumatically releasable height lock, photocell synchronization control ♦ safe control of the lift 24V from the level of the external control box ♦ hydraulic safety devices in the event of a sudden oil leak or overload ♦ extreme and safe sensor platform locations ♦ sound signal of the final descent phase.

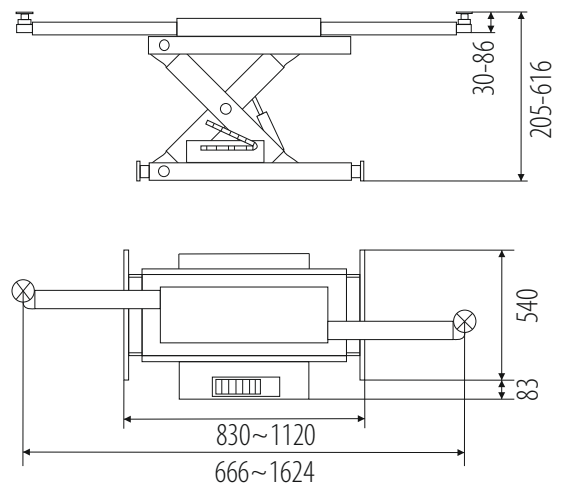


OPTIONAL EQUIPMENT

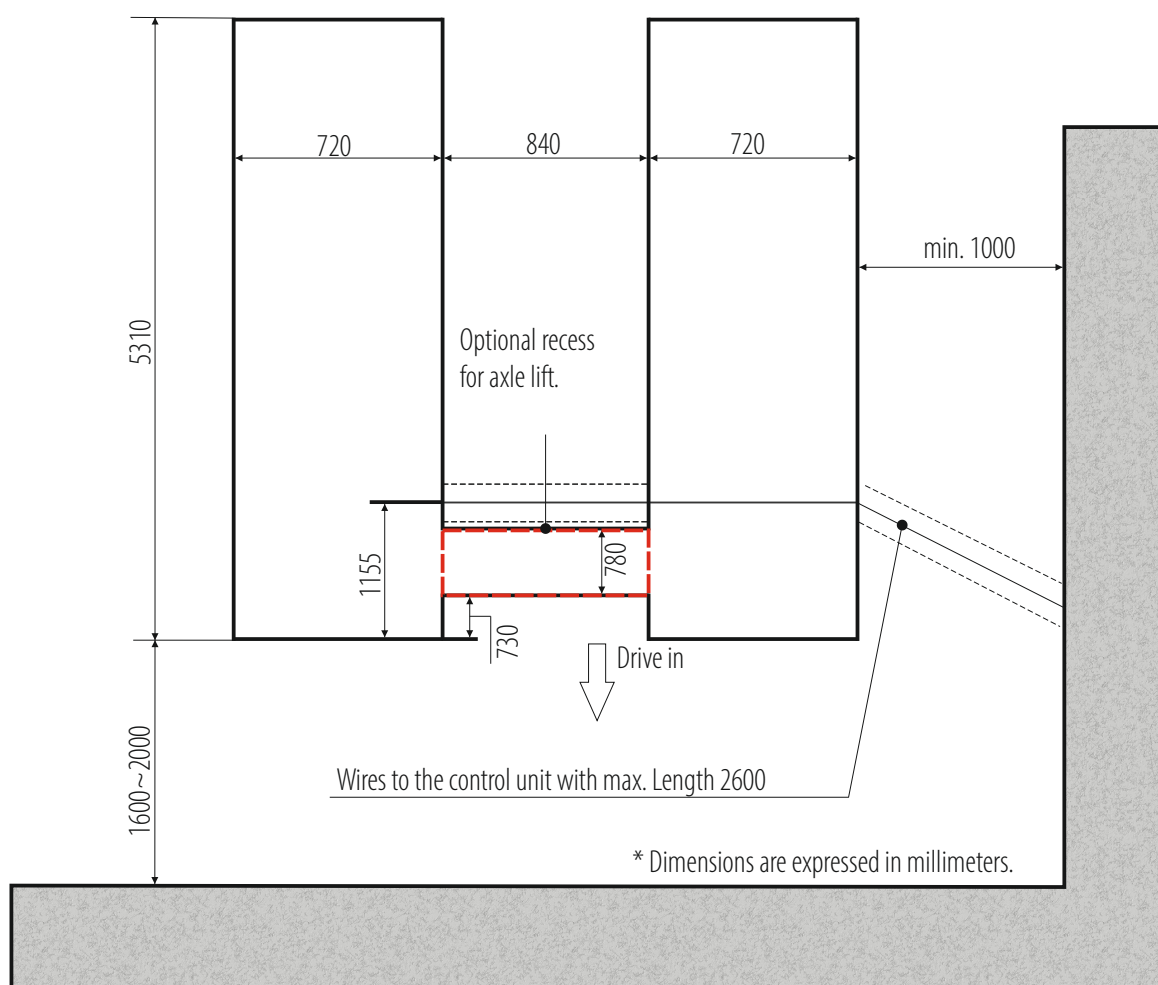
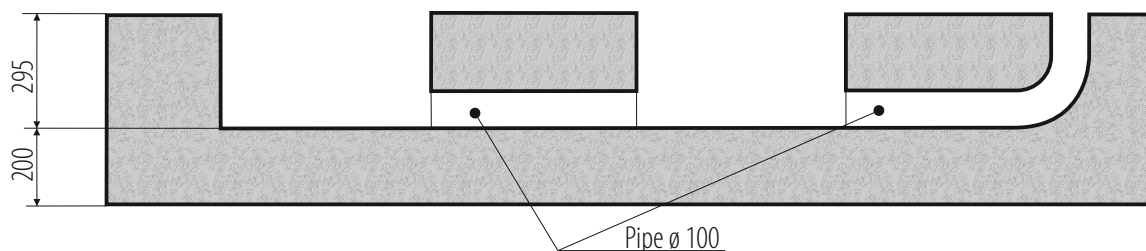
AXLE JACKS XT250H



Axle jacks with a lifting capacity of 2500 kg ♦ hand lever hydraulic pump ♦ adjustable shoulder spacing
 ♦ mechanical height lock ♦ points of support with smooth height adjustment.



PN500GP



INSTALLATION REQUIREMENTS:



Concrete class: B25 or C20 / 25 with a minimum mounting area: 5510x2580x200mm ♦ Acceptable floor imbalance: +/- 5mm, floor execution: 3 weeks before assembly ♦ Mounting anchors: mechanical M12 / 150 mm 16 pieces or chemical M16 / 250mm ♦ Hydraulic oil: HL32, 18.0l ♦ Power supply: 5x2.5mm cable to the place of assembly ♦ Pneumatic supply: dry and lubricant air, min. 6 bar (max. 8 bar) ♦ Current protection: min. 32A with 3-phase 400V / 50Hz power supply.

Installation allowed only in closed areas ♦ prohibition of using reinforcement 20 cm from the top thicker than 4mm² ♦ assembly for chemical anchors for an additional fee (submit in advance, preferably when setting the date of assembly) ♦ All connections, with particular reference to electrical connections, they must be made by authorized persons ♦ The installation must remain carried out by qualified personnel according to the rules attached in this building plan ♦ In the case of assembly by Nortec or its authorized service center, the lift must be on solid ground.

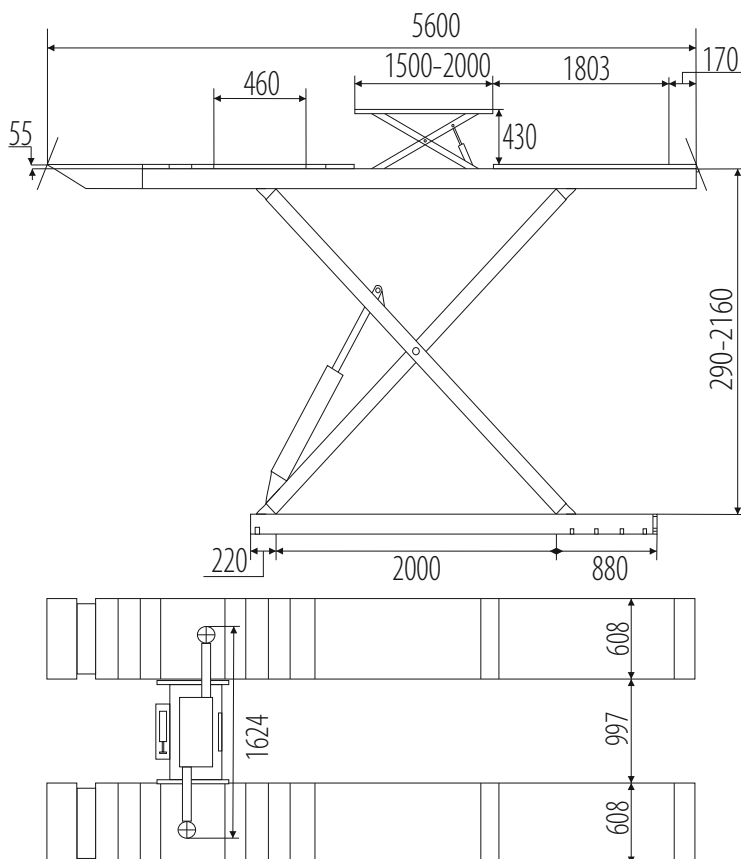
PN500GPL



*REVIEW PICTURE.

CAPACITY:	5000 kg
POWER SUPPLY:	400V/50Hz
PNEUMATIC SUPPLY:	8 bar max.
MOTOR POWER:	3,5kW
LIFTING HEIGHT:	290-2160 mm
PLATFORMS:	608 x 5600 mm
NOISE LEVEL:	<70 dB (A)
WEIGHT:	2570 kg

Electrohydraulic lift for wheel alignments ♦ electrohydraulic axle jacks
 ♦ pneumatically released height lock ♦ long expansion plates, recesses under turntables ♦ lift designed for mounting in a moat or on the floor (after ordering optional invasions) ♦ mechanical, pneumatically releasable height lock, photocell synchronization control ♦ safe control of the lift 24V from the level of the external control box ♦ hydraulic safety devices in the event of a sudden oil leak or overload ♦ extreme and safe sensor platform locations ♦ sound signal of the final descent phase.

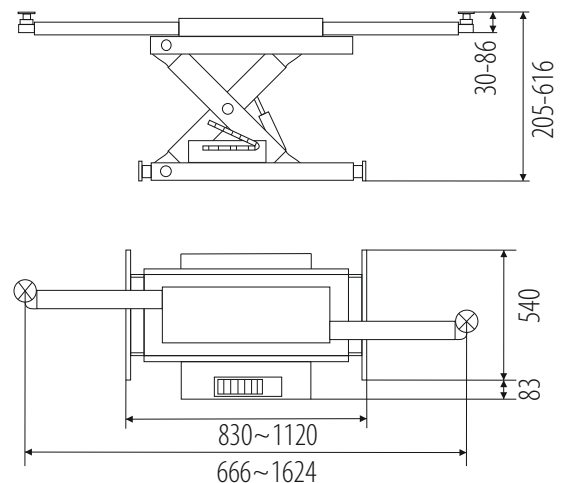


OPTIONAL EQUIPMENT

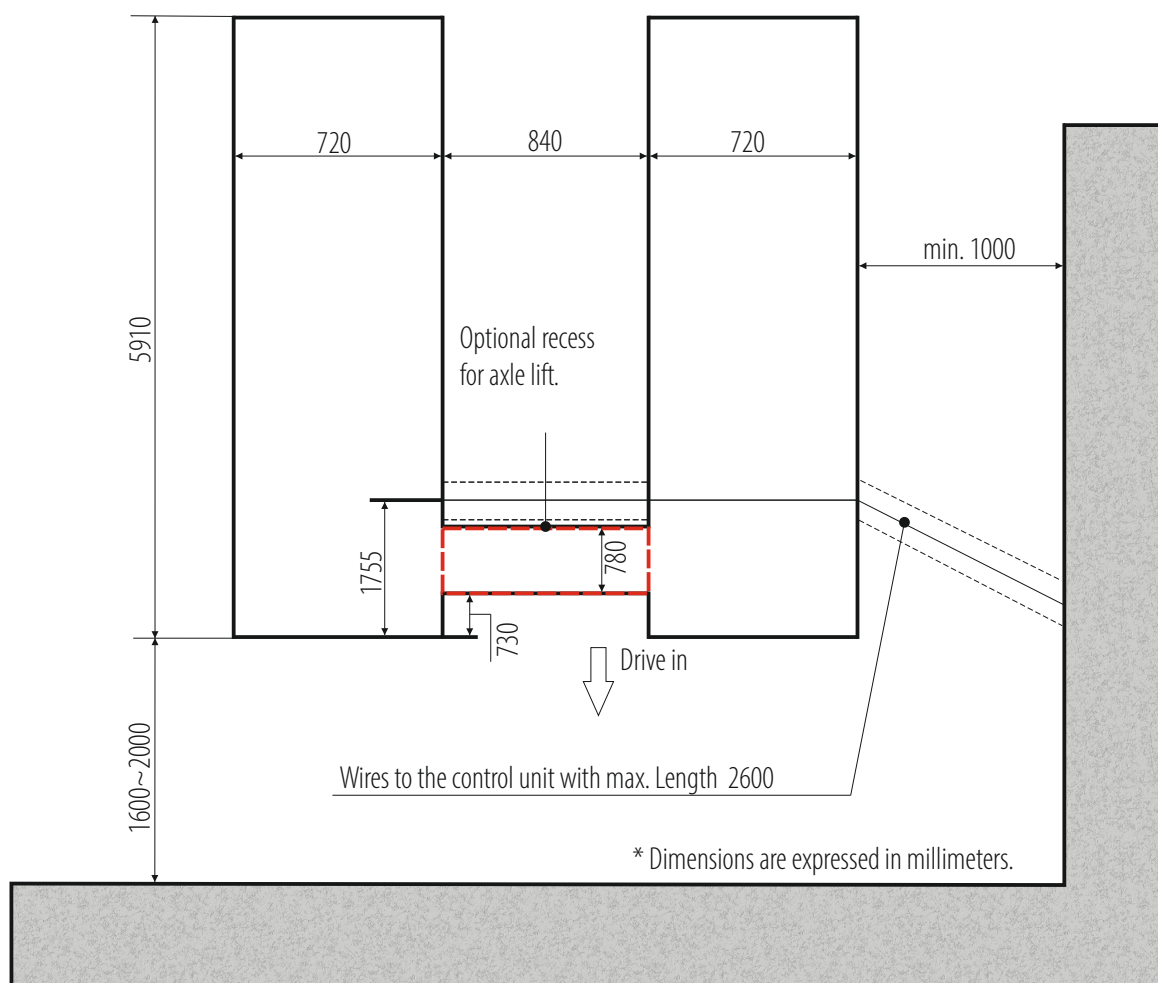
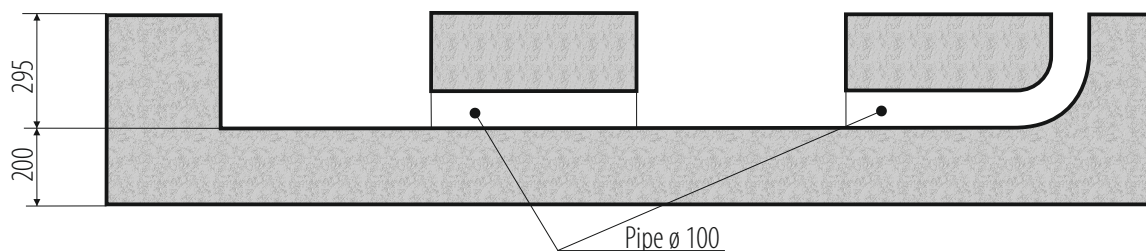
AXLE JACKS XT250H



Axle jacks with a lifting capacity of 2500 kg ♦ hand lever hydraulic pump ♦ adjustable shoulder spacing
 ♦ mechanical height lock ♦ points of support with smooth height adjustment.



PN500GPL



INSTALLATION REQUIREMENTS:



Concrete class: B25 or C20 / 25 with a minimum mounting area: 6110x2580x200mm ♦ Acceptable floor imbalance: +/- 5mm, floor execution: 3 weeks before assembly ♦ Mounting anchors: mechanical M12 / 150 mm 16 pieces or chemical M16 / 250mm ♦ Hydraulic oil: HL32, 18.0l ♦ Power supply: 5x2.5mm cable to the place of assembly ♦ Pneumatic supply: dry and lubricant air, min. 6 bar (max. 8 bar) ♦ Current protection: min. 32A with 3-phase 400V / 50Hz power supply.

Installation allowed only in closed areas ♦ prohibition of using reinforcement 20 cm from the top thicker than 4mm² ♦ assembly for chemical anchors for an additional fee (submit in advance, preferably when setting the date of assembly) ♦ All connections, with particular reference to electrical connections, they must be made by authorized persons ♦ The installation must remain carried out by qualified personnel according to the rules attached in this building plan ♦ In the case of assembly by Nortec or its authorized service center, the lift must be on solid ground.

PN500N

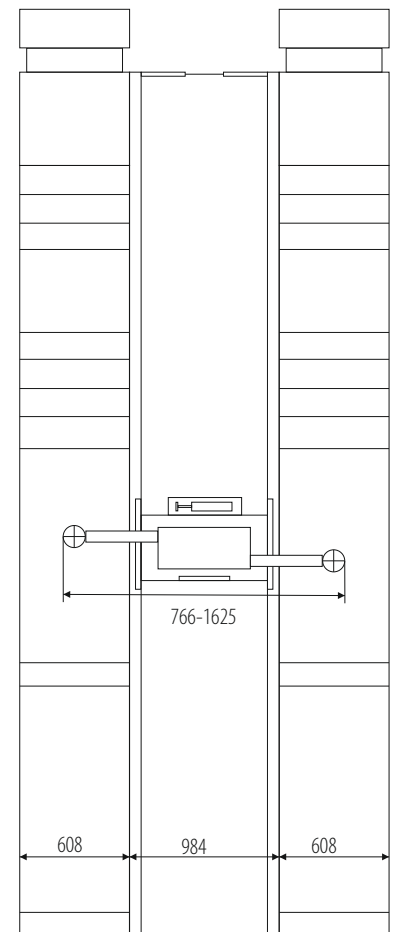
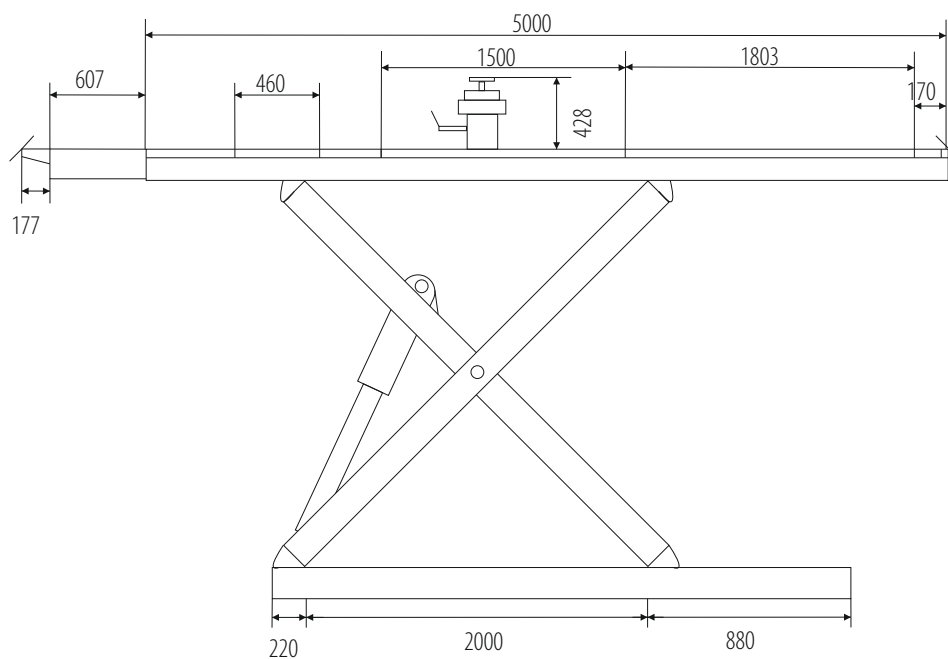


*REVIEW PICTURE.

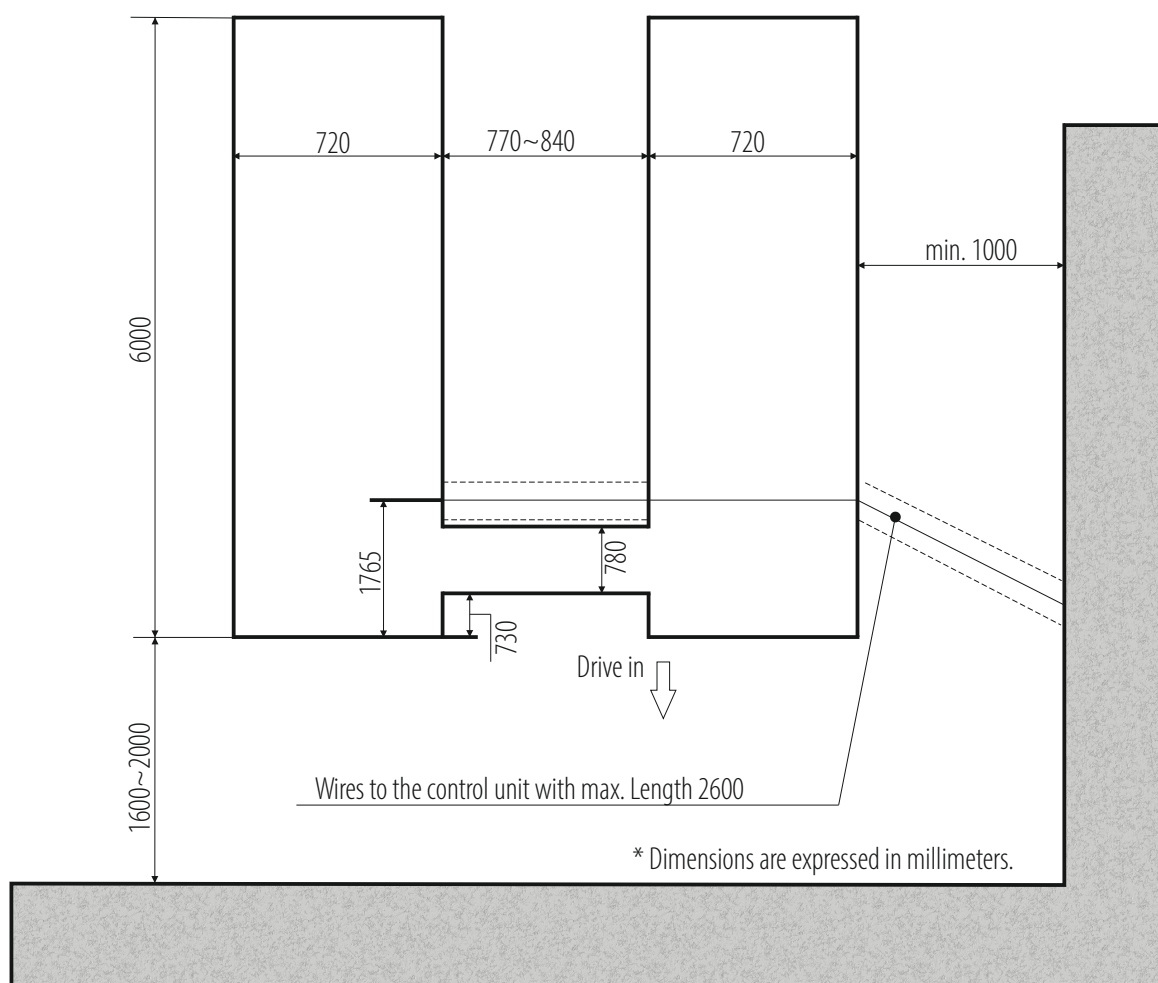
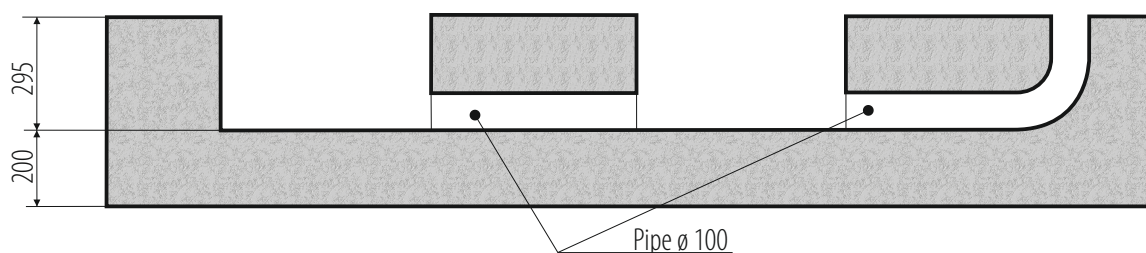


CAPACITY:	5000 kg
POWER SUPPLY:	400V/50Hz
PNEUMATIC SUPPLY:	8 bar max.
MOTOR POWER:	3,5kW
LIFTING HEIGHT:	290-2160 mm
PLATFORMS:	608 x 5607 mm
POZIOM HAŁASU:	<70 dB (A)
WEIGHT:	2570 kg

Scissor lift for geometries with play detector ♦ hydraulic axle lift pneumatically powered, pneumatically released height lock ♦ installation in a moat or on a floor (optional) mechanical, pneumatically released height lock, photocell synchronization control ♦ control of the elevator with 24V safe voltage from the level of an external control box ♦ hydraulic safety devices in the event of sudden oil or overload ♦ sensor of extreme and safe position of platforms ♦ acoustic signal of the final descent phase.



PN500N



INSTALLATION REQUIREMENTS:



Concrete class: B25 or C20 / 25 with a minimum mounting area: 6220x2480x200mm ♦ Acceptable floor imbalance: +/- 5mm, floor execution: 3 weeks before assembly ♦ Mounting anchors: mechanical M12 / 150 mm 16 pieces or chemical M16 / 250mm ♦ Hydraulic oil: HL32, 18.0l ♦ Power supply: 5x2.5mm cable to the place of assembly ♦ Pneumatic supply: dry and lubricant air, min. 6 bar (max. 8 bar) ♦ Current protection: min. 32A with 3-phase 400V / 50Hz power supply.

Installation allowed only in closed areas ♦ prohibition of using reinforcement 20 cm from the top thicker than 4mm² ♦ assembly for chemical anchors for an additional fee (submit in advance, preferably when setting the date of assembly) ♦ All connections, with particular reference to electrical connections, they must be made by authorized persons ♦ The installation must remain carried out by qualified personnel according to the rules attached in this building plan ♦ In the case of assembly by Nortec or its authorized service center, the lift must be on solid ground.



Scan and see more!



PD4000N



CAPACITY:	4000 kg
POWER SUPPLY:	400V/50Hz
MOTOR POWER:	2,2 kW
LIFTING HEIGHT:	1800 mm
CLEARANCE:	2821 mm
2-STAGE ARMS:	712-1051 mm
3-STAGE ARMS:	793-1500 mm
OIL PRESSURE:	16 MPa
NOISE LEVEL:	<70 dB
WEIGHT:	620 kg

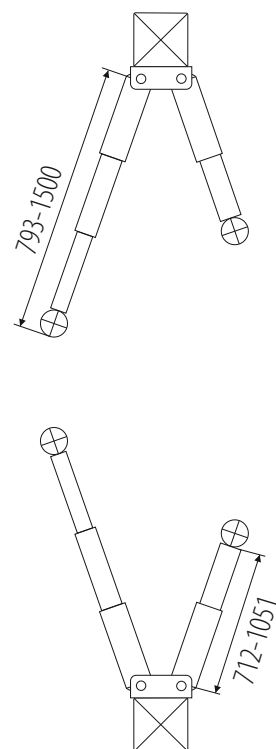
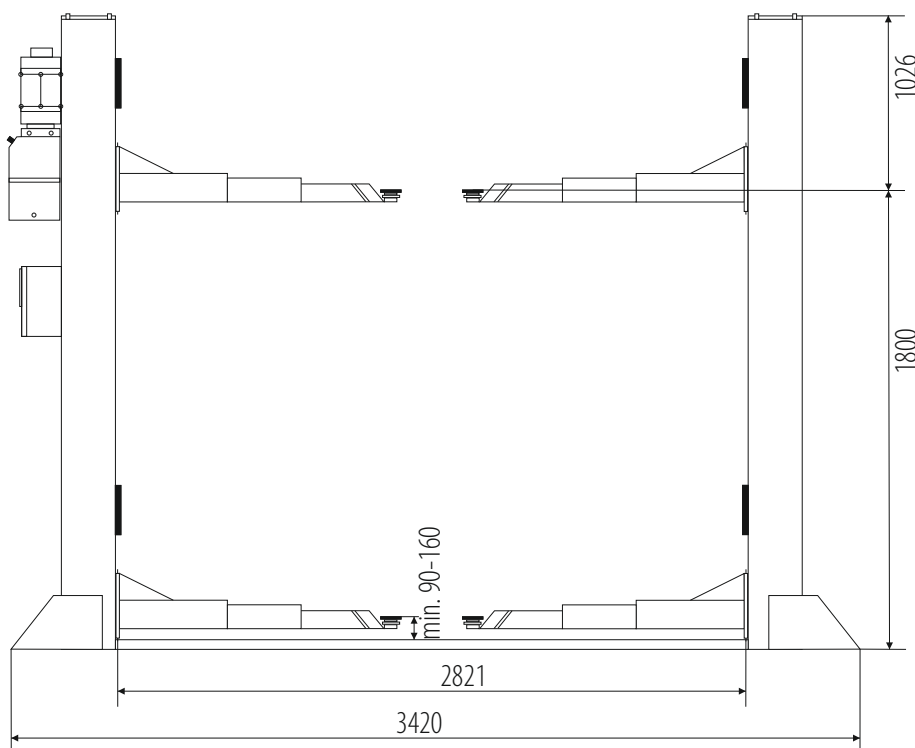
Electrohydraulic lift ♦ mechanical synchronization at floor level
 ♦ electromagnetic height lock ♦ automatic arm lock during lifting
 ♦ set of door protection ♦ low threshold <25 mm!



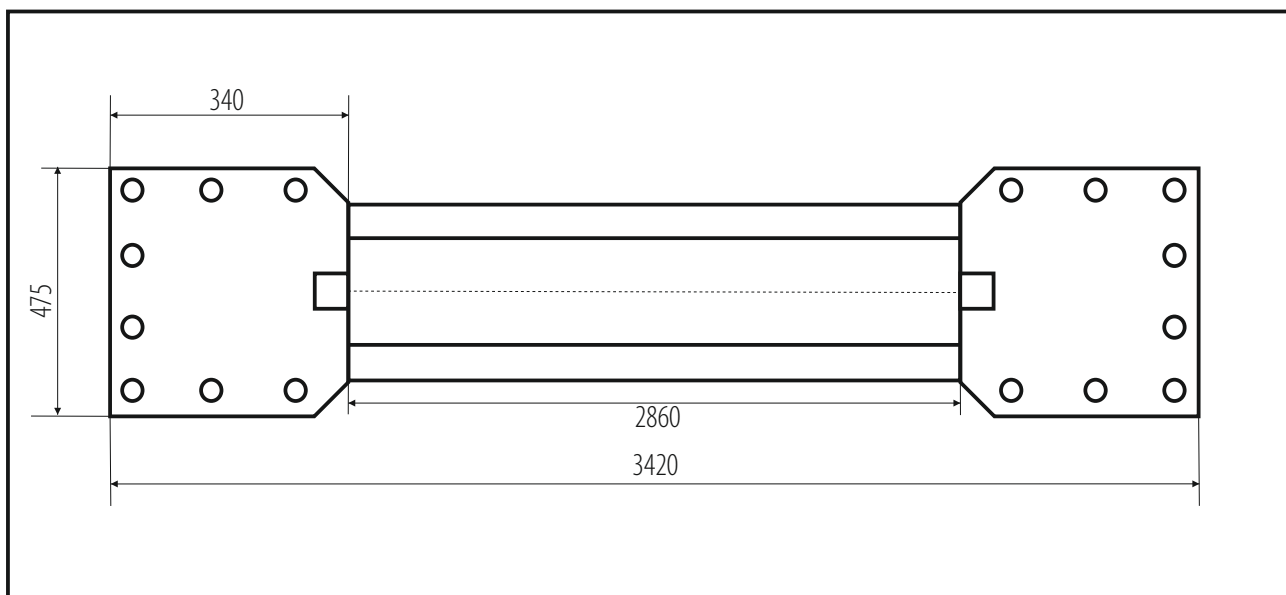
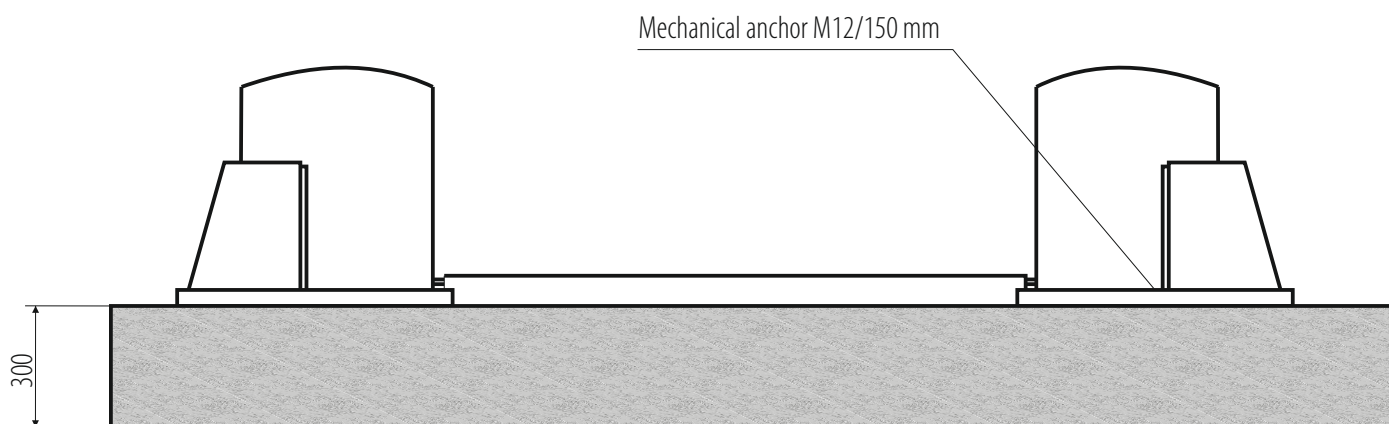
Threshold not exceeding height 25 mm!



Double adjustable thread



PN4000N



FLOOR DIMENSIONS: 4000x1500mm

INSTALLATION REQUIREMENTS:



Concrete class: B25 or C20 / 25 with a minimum mounting area: 4000x1500x300mm ♦ Acceptable floor imbalance: +/- 5mm, floor execution: 3 weeks before assembly ♦ Mounting anchors: mechanical M12 / 150 mm 10 pieces or chemical M16 / 250mm ♦ Hydraulic oil: HL32, 10.0l ♦ Power supply: 5x2.5mm cable to the place of assembly ♦ Current protection: min. 32A with 3-phase 400V / 50Hz power supply.

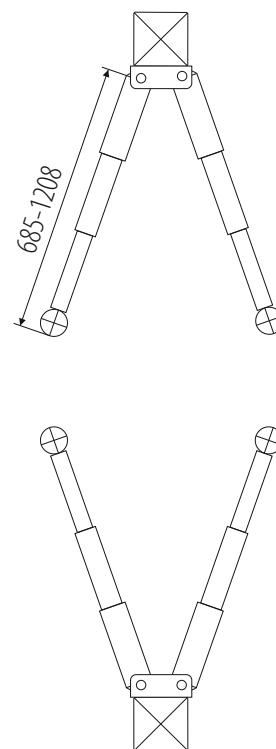
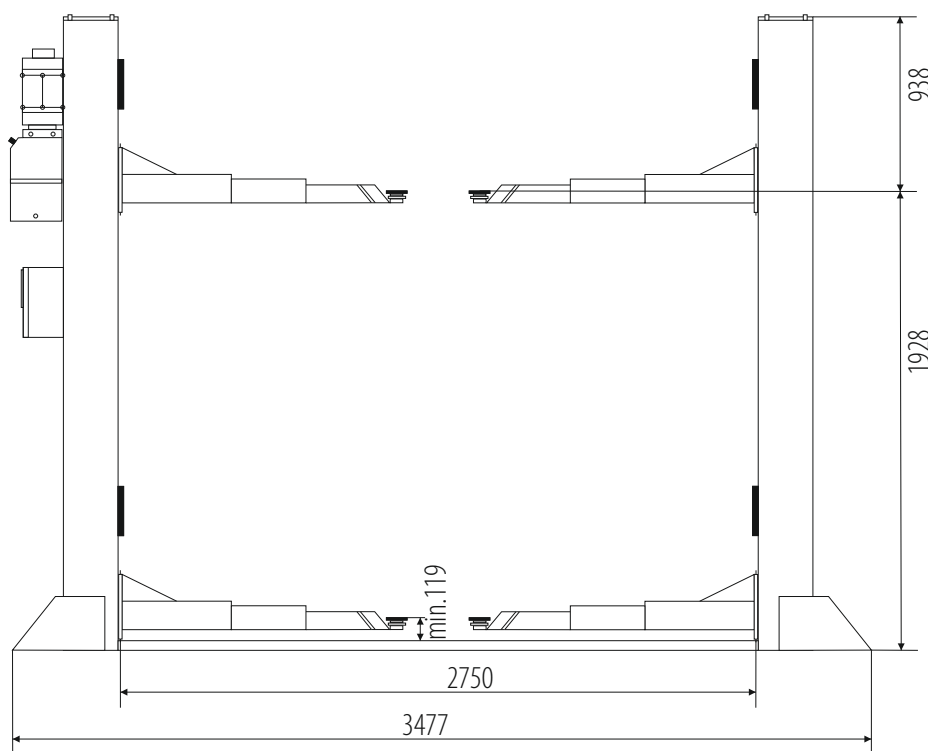
Installation allowed only in closed areas ♦ prohibition of using reinforcement 20 cm from the top thicker than 4mm² ♦ assembly for chemical anchors for an additional fee (submit in advance, preferably when setting the date of assembly) ♦ All connections, with particular reference to electrical connections, they must be made by authorized persons ♦ The installation must remain carried out by qualified personnel according to the rules attached in this building plan ♦ In the case of assembly by Nortec or its authorized service center, the lift must be on solid ground.

PD4000HE



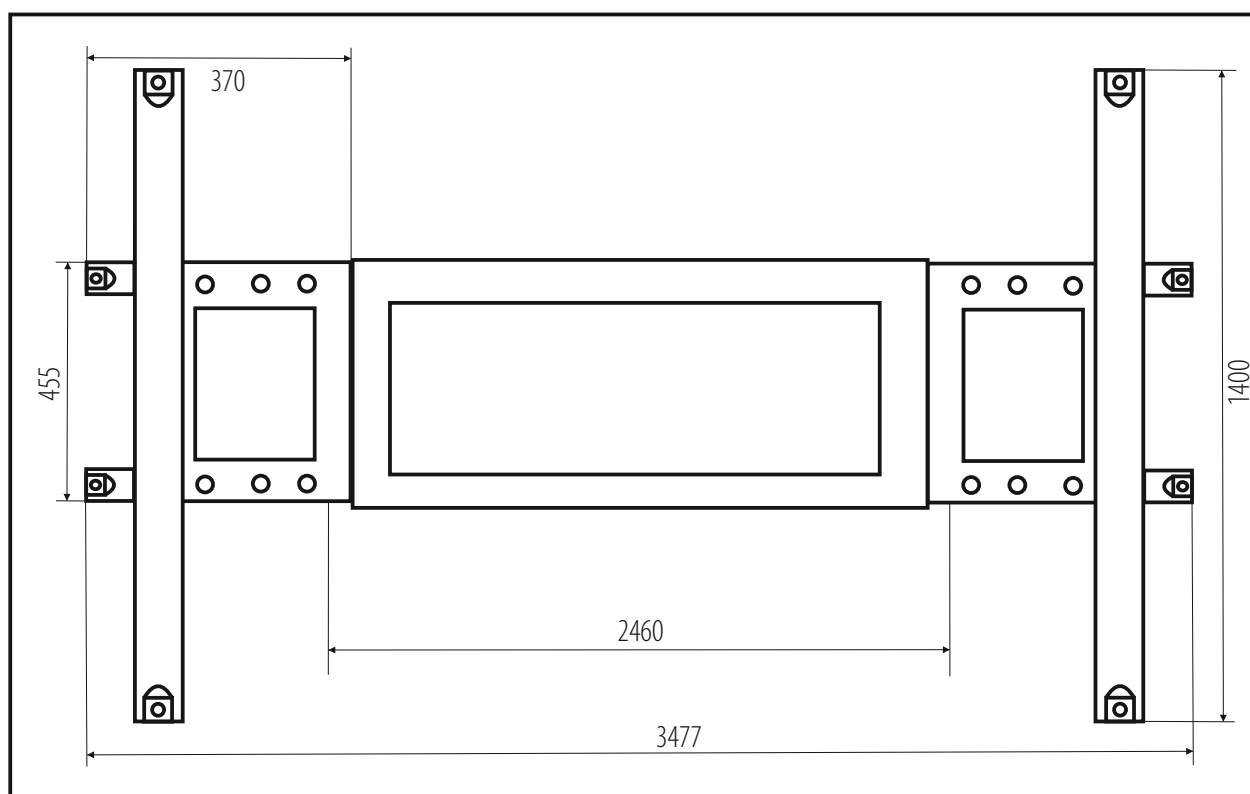
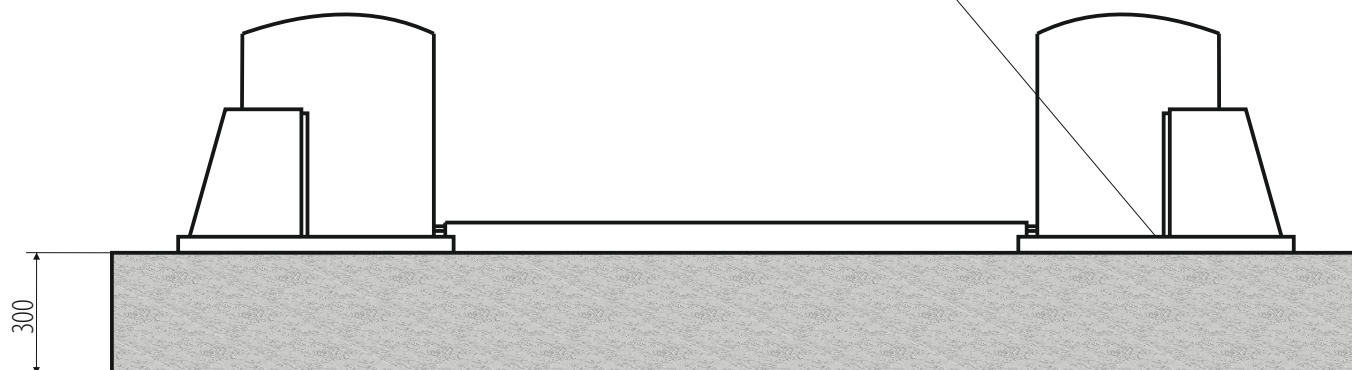
CAPACITY:	4000 kg
POWER SUPPLY:	230V/400V/50Hz
MOTOR POWER:	2,2 kW
LIFTING HEIGHT:	1928 mm
CLEARANCE:	2750 mm
3-STAGE ARMS:	685-1208 mm
OIL PRESSURE:	16 MPa
NOISE LEVEL:	<80 dB
WEIGHT:	620 kg

Electrohydraulic lift ♦ mechanical synchronization at floor level ♦ electromagnetic lock height ♦ automatic arm lock during lifting ♦ set of door protection



PD4000HE

Mechanical anchor M12/150 mm



FLOOR DIMENSIONS: 4000x1900mm

INSTALLATION REQUIREMENTS:



Concrete class: B25 or C20 / 25 with a minimum mounting area: 4000x1900x300mm ♦ Acceptable floor imbalance: +/- 5mm, floor execution: 3 weeks before assembly ♦ Mounting anchors: mechanical M12 / 150 mm 10 pieces or chemical M16 / 250mm ♦ Hydraulic oil: HL32, 10.0l ♦ Power supply: 5x2.5mm cable to the place of assembly ♦ Current protection: min. 32A with 3-phase 400V / 50Hz power supply.

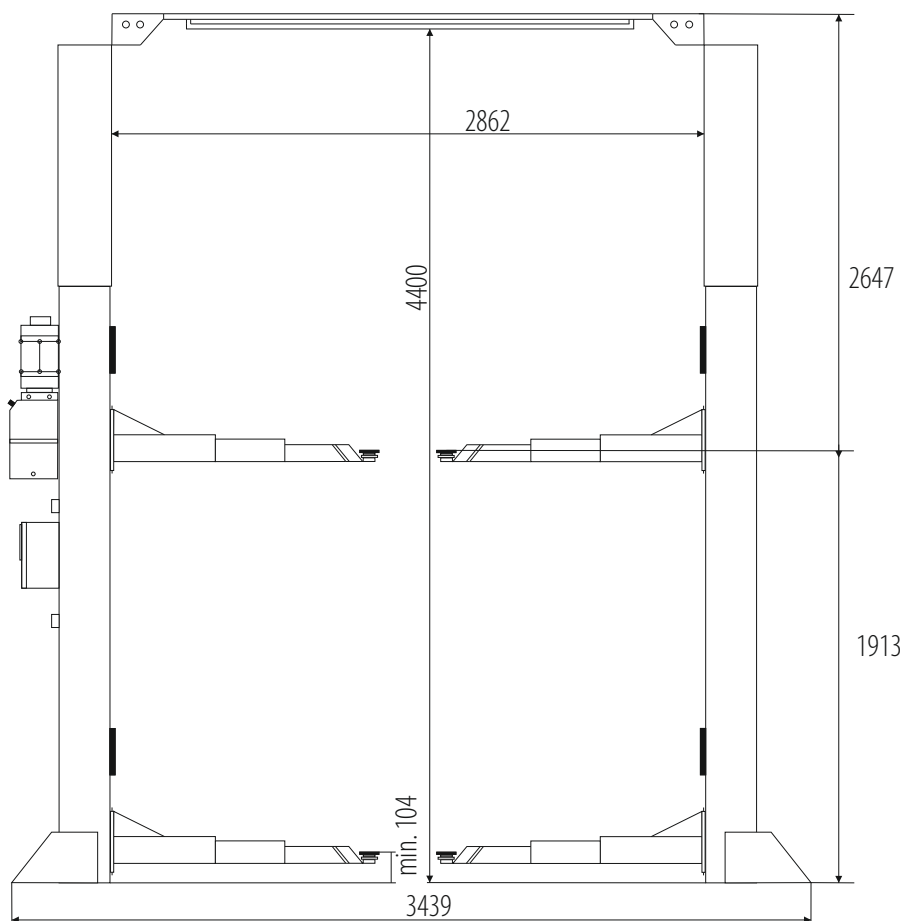
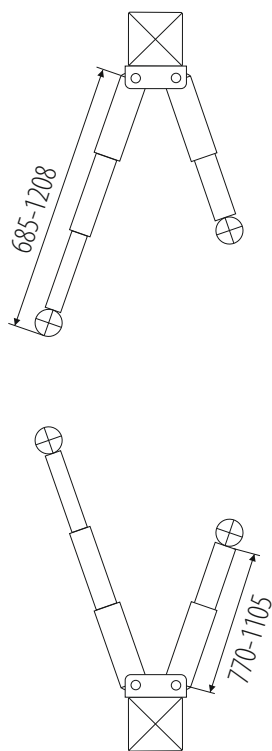
Installation allowed only in closed areas ♦ prohibition of using reinforcement 20 cm from the top thicker than 4mm² ♦ assembly for chemical anchors for an additional fee (submit in advance, preferably when setting the date of assembly) ♦ All connections, with particular reference to electrical connections, they must be made by authorized persons ♦ The installation must remain carried out by qualified personnel according to the rules attached in this building plan ♦ In the case of assembly by Nortec or its authorized service center, the lift must be on solid ground.

PD4000CE



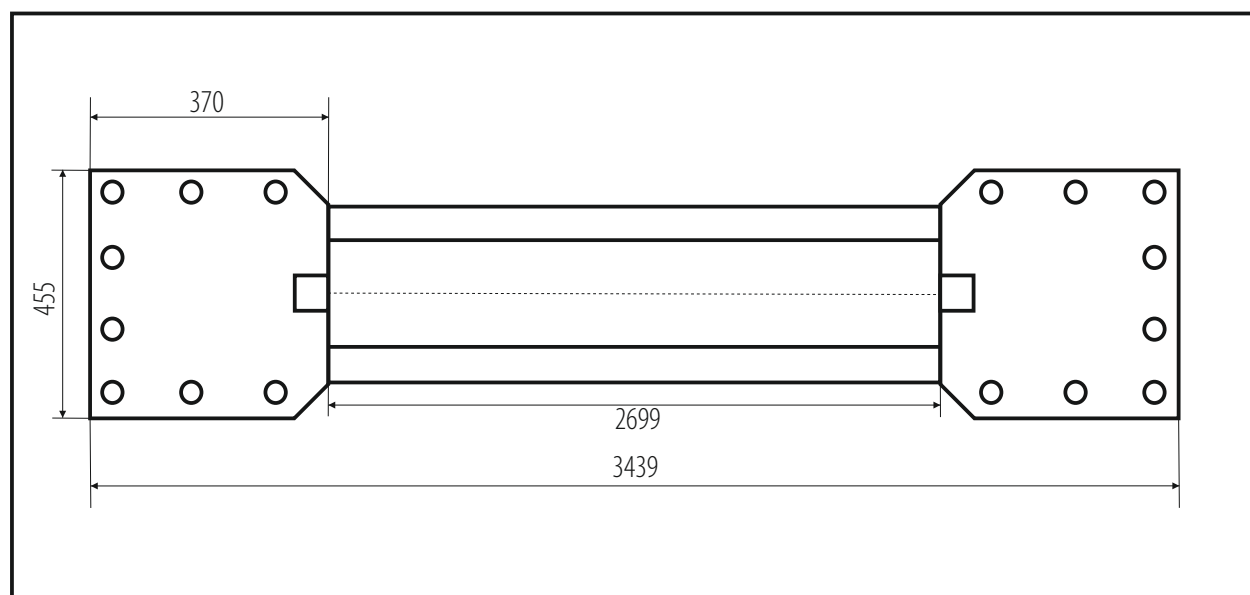
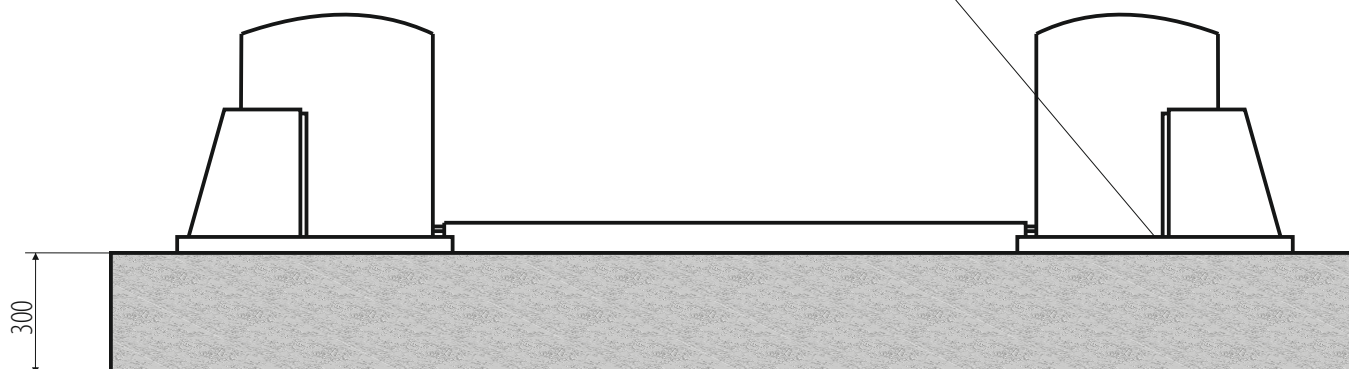
CAPACITY:	4000 kg
POWER SUPPLY:	400V/50Hz
MOTOR POWER:	2,2 kW
LIFTING HEIGHT:	104 - 1913 mm
MACHINE HEIGHT:	4560 mm
CLEARANCE:	2862 mm
2-STAGE ARMS:	770 - 1105 mm
3-STAGE ARMS:	685 - 1208 mm
OIL PRESSURE:	16 MPa
NOISE LEVEL:	<80 dB

Baseless electrohydraulic 2 post lift ♦ Mechanical synchronization
 ♦ electromagnetic height lock ♦ automatic arm lock during lifting
 ♦ set of door protection.



PD4000CE

Mechanical anchor M12/150 mm



FLOOR DIMENSIONS: 4000x1500mm

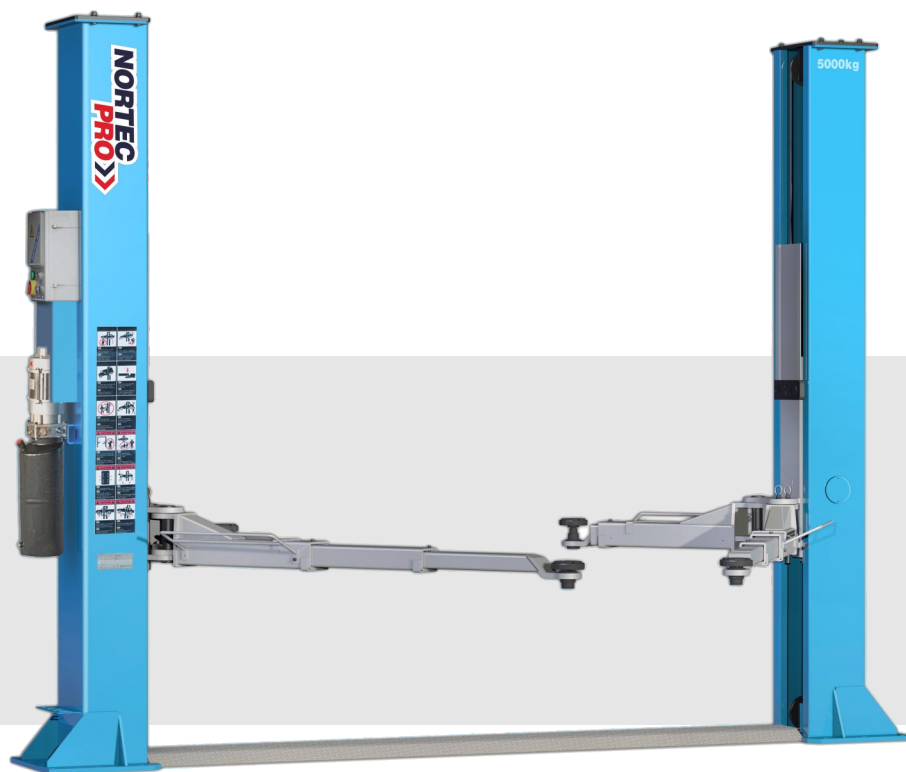
INSTALLATION REQUIREMENTS:



Concrete class: B25 or C20 / 25 with a minimum mounting area: 4000x1500x300mm ♦ Acceptable floor imbalance: +/- 5mm, floor execution: 3 weeks before assembly ♦ Mounting anchors: mechanical M12 / 150 mm 10 pieces or chemical M16 / 250mm ♦ Hydraulic oil: HL32, 10.0l ♦ Power supply: 5x2.5mm cable to the place of assembly ♦ Current protection: min. 32A with 3-phase 400V / 50Hz power supply.

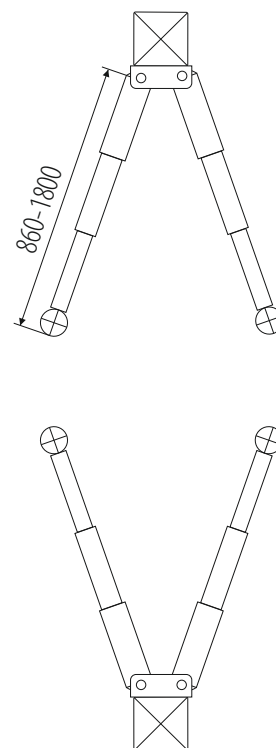
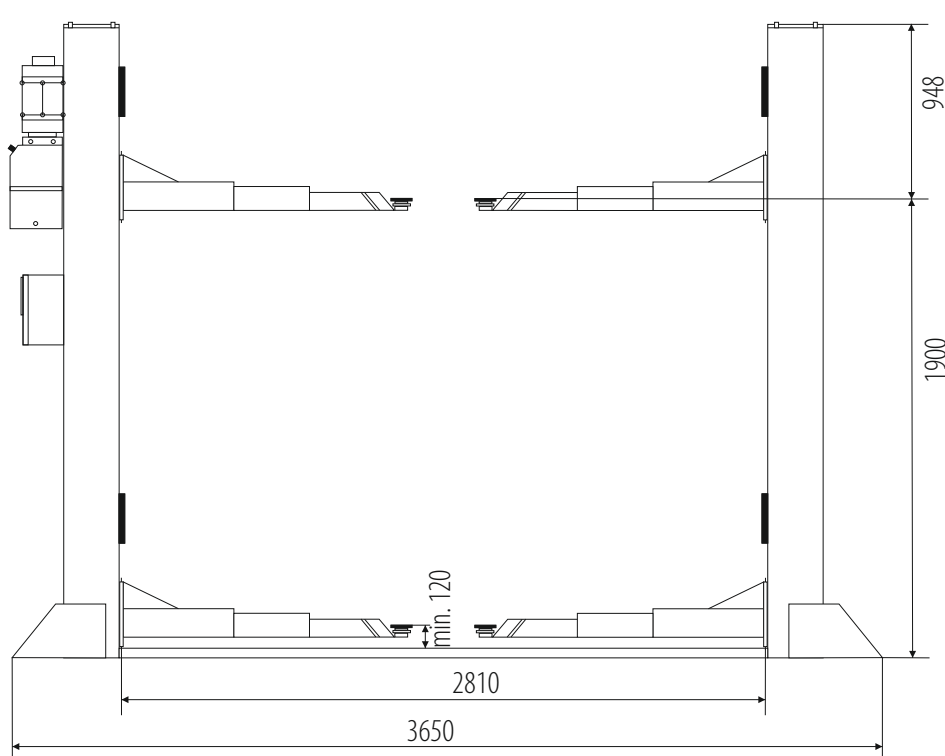
Installation allowed only in closed areas ♦ prohibition of using reinforcement 20 cm from the top thicker than 4mm² ♦ assembly for chemical anchors for an additional fee (submit in advance, preferably when setting the date of assembly) ♦ All connections, with particular reference to electrical connections, they must be made by authorized persons ♦ The installation must remain carried out by qualified personnel according to the rules attached in this building plan ♦ In the case of assembly by Nortec or its authorized service center, the lift must be on solid ground.

PD5000



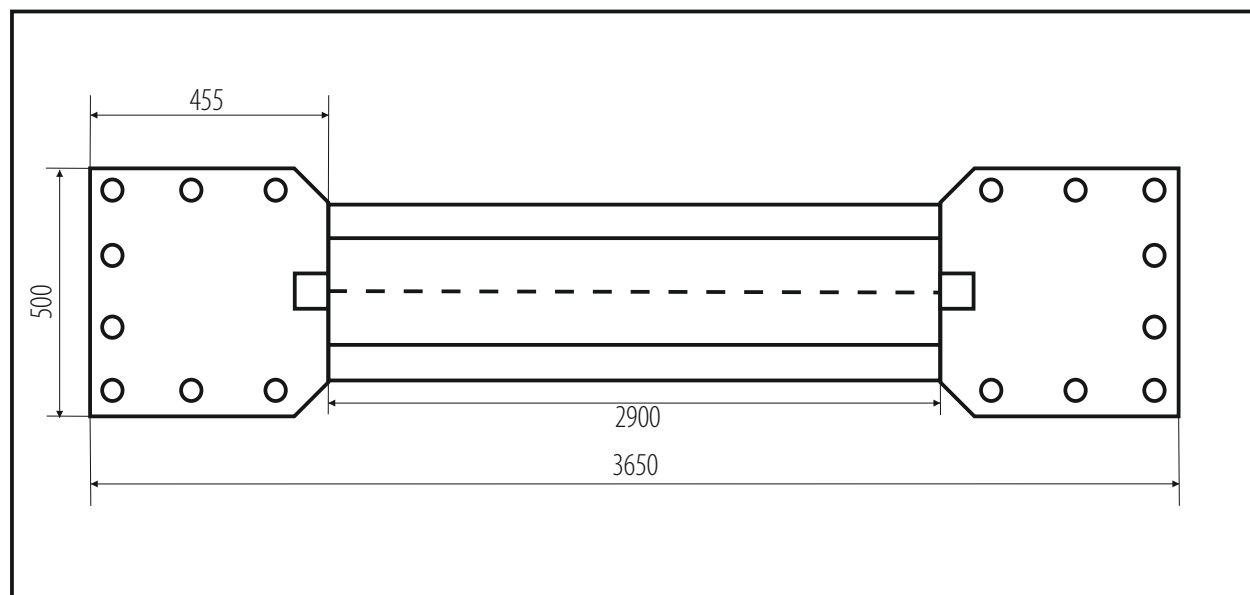
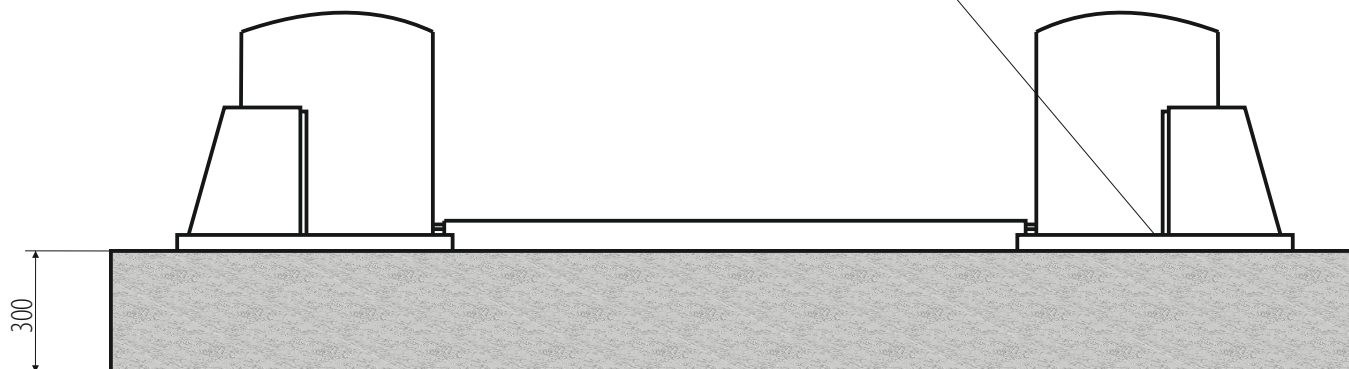
CAPACITY:	5000 kg
POWER SUPPLY:	400V/50Hz
MOTOR POWER:	2,6 kW
LIFTING HEIGHT:	1900 mm
CLEARANCE:	2500 mm
3-STAGE ARMS:	860-1800 mm
OIL PRESSURE:	20 MPa
NOISE LEVEL:	<70 dB
WEIGH:	950 kg

Electrohydraulic lift ♦ mechanical synchronization at floor level ♦ electromagnetic height lock
 ♦ automatic arm lock during lifting ♦ set of door protection ♦ 180mm adapters in standard
 ♦ safe 24V voltage control ♦ extreme and safe sensors trolley positions ♦ hydraulic safety
 device in the event of sudden oil leakage or overload.



PD5000

Mechanical anchor M12/150 mm



FLOOR DIMENSIONS: 4150x1500mm

INSTALLATION REQUIREMENTS:



Concrete class: B25 or C20 / 25 with a minimum mounting area: 4150x1500x300mm ♦ Acceptable floor imbalance: +/- 5mm, floor execution: 3 weeks before assembly ♦ Mounting anchors: mechanical M12 / 150 mm 16 pieces or chemical M16 / 250mm ♦ Hydraulic oil: HL46, 10.0l ♦ Power supply: 5x2.5mm cable to the place of assembly ♦ Current protection: min. 32A with 3-phase 400V / 50Hz power supply.

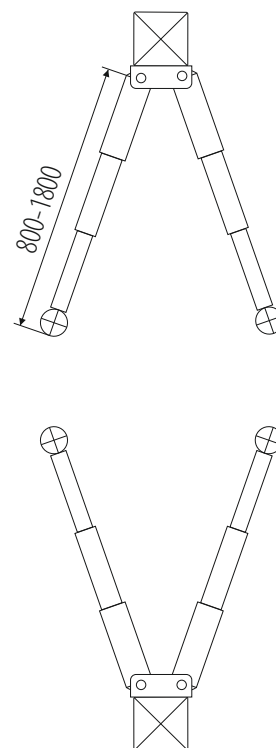
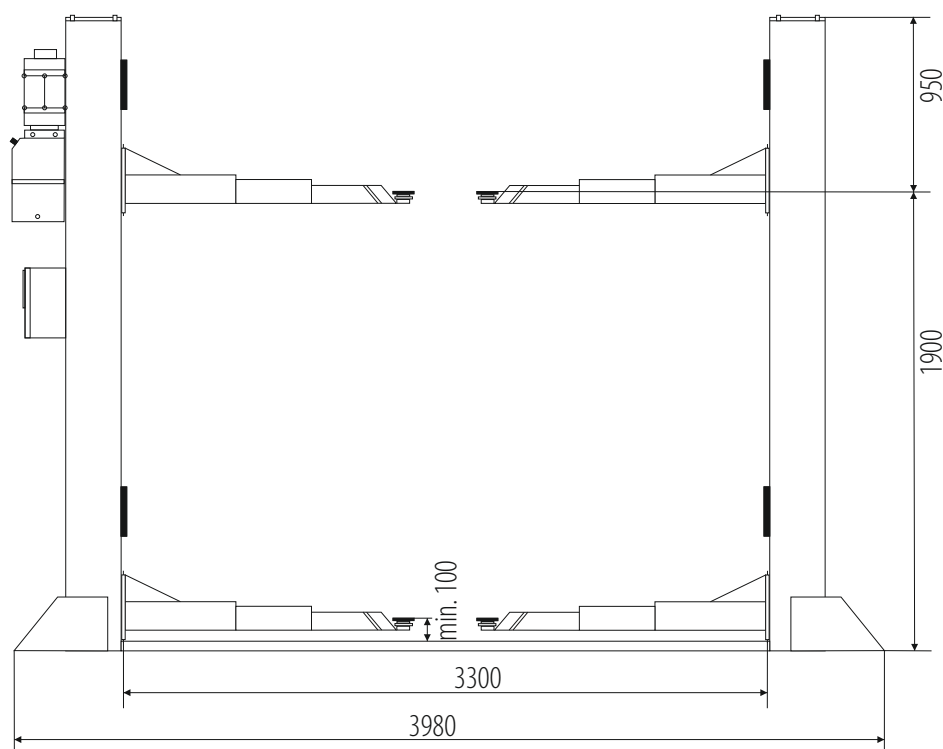
Installation allowed only in closed areas ♦ prohibition of using reinforcement 20 cm from the top thicker than 4mm² ♦ assembly for chemical anchors for an additional fee (submit in advance, preferably when setting the date of assembly) ♦ All connections, with particular reference to electrical connections, they must be made by authorized persons ♦ The installation must remain carried out by qualified personnel according to the rules attached in this building plan ♦ In the case of assembly by Nortec or its authorized service center, the lift must be on solid ground.

PD5500



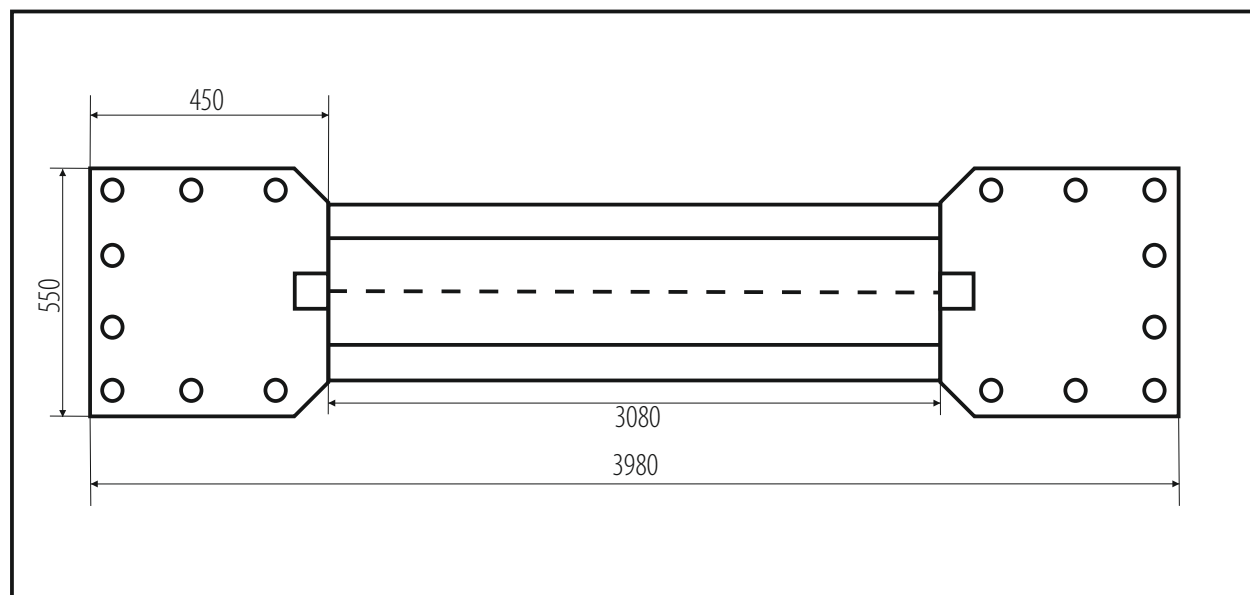
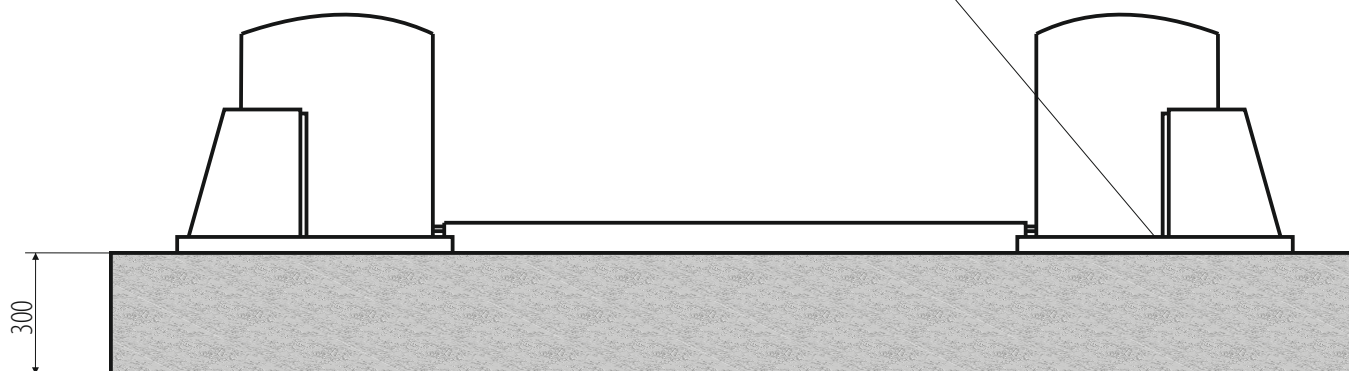
CAPACITY:	5500 kg
POWER SUPPLY:	400V/50Hz
MOTOR POWER:	2,6 kW
LIFTING HEIGHT:	1900 mm
CLEARANCE:	3030 mm
3-STAGE ARMS:	860-1800 mm
OIL PRESSURE:	20 MPa
NOISE LEVEL:	<75 dB
WEIGHT:	850 kg

Electrohydraulic lift ♦ mechanical synchronization at floor level
 ♦ electromagnetic height lock ♦ automatic arm lock during lifting
 ♦ set of door protection ♦ 180mm adapters in standard ♦ safe 24V
 voltage control ♦ extreme and safe sensors trolley positions ♦ hydraulic
 safety device in the event of sudden oil leakage or overload.



PD5500

Kotwa mechaniczna M12/150 mm



WYMIARY POSADZKI: 4500x1500mm

INSTALLATION REQUIREMENTS:



Concrete class: B25 or C20 / 25 with a minimum mounting area: 4150x1500x300mm ♦ Acceptable floor imbalance: +/- 5mm, floor execution: 3 weeks before assembly ♦ Mounting anchors: mechanical M12 / 150 mm 16 pieces or chemical M16 / 250mm ♦ Hydraulic oil: HL46, 10.0l ♦ Power supply: 5x2.5mm cable to the place of assembly ♦ Current protection: min. 32A with 3-phase 400V / 50Hz power supply.

Installation allowed only in closed areas ♦ prohibition of using reinforcement 20 cm from the top thicker than 4mm² ♦ assembly for chemical anchors for an additional fee (submit in advance, preferably when setting the date of assembly) ♦ All connections, with particular reference to electrical connections, they must be made by authorized persons ♦ The installation must remain carried out by qualified personnel according to the rules attached in this building plan ♦ In the case of assembly by Nortec or its authorized service center, the lift must be on solid ground.

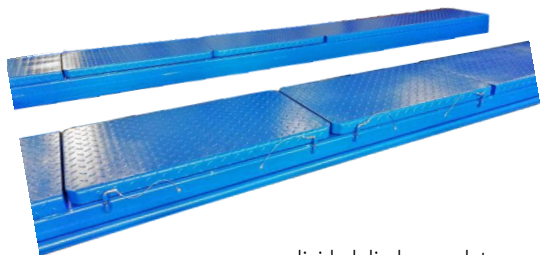


Zeskanuj i zobacz więcej!

PO500N



CAPACITY:	5000 kg
POWER SUPPLY:	400V/50Hz
MOTOR POWER:	2,2 kW
TOTAL HEIGHT:	2204 mm
LIFTING HEIGHT:	1800 mm
CLEARANCE:	3000 mm
PLATFORMS:	510x5492 mm
NOISE LEVEL:	<70 dB (A)
WEIGHT:	1500 kg



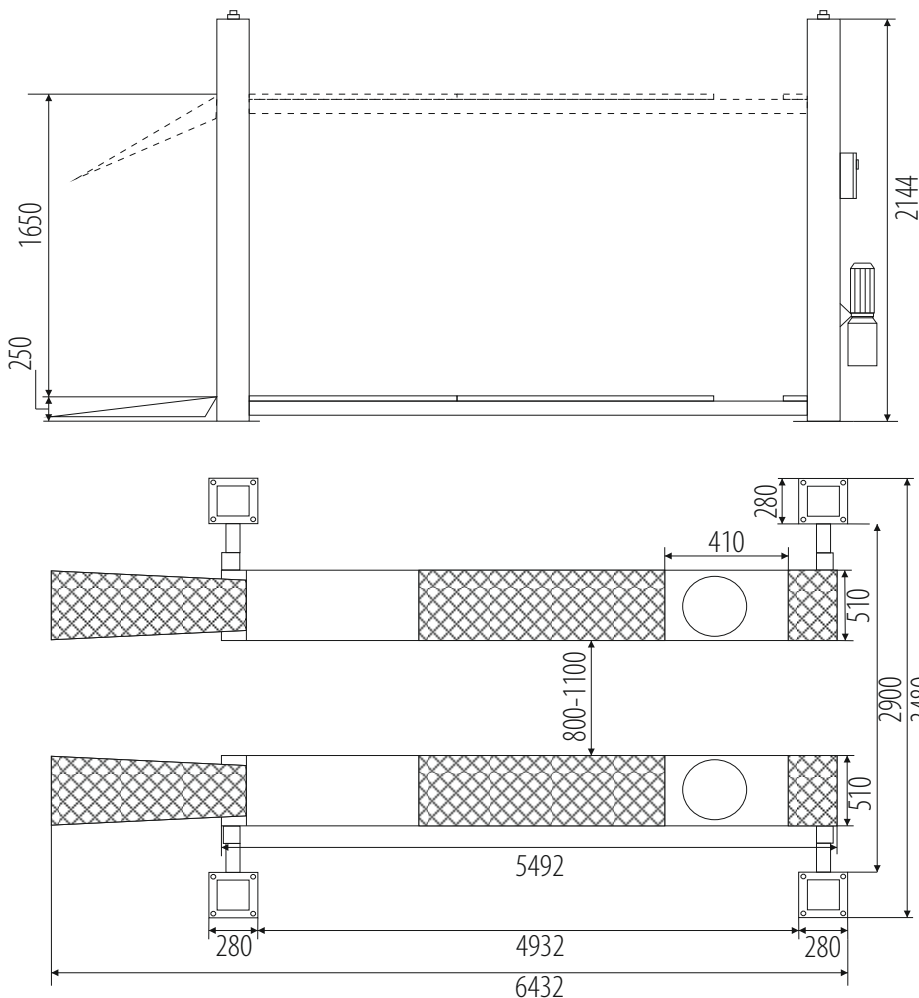
divided discharge plates

STANDARD EQUIPMENT

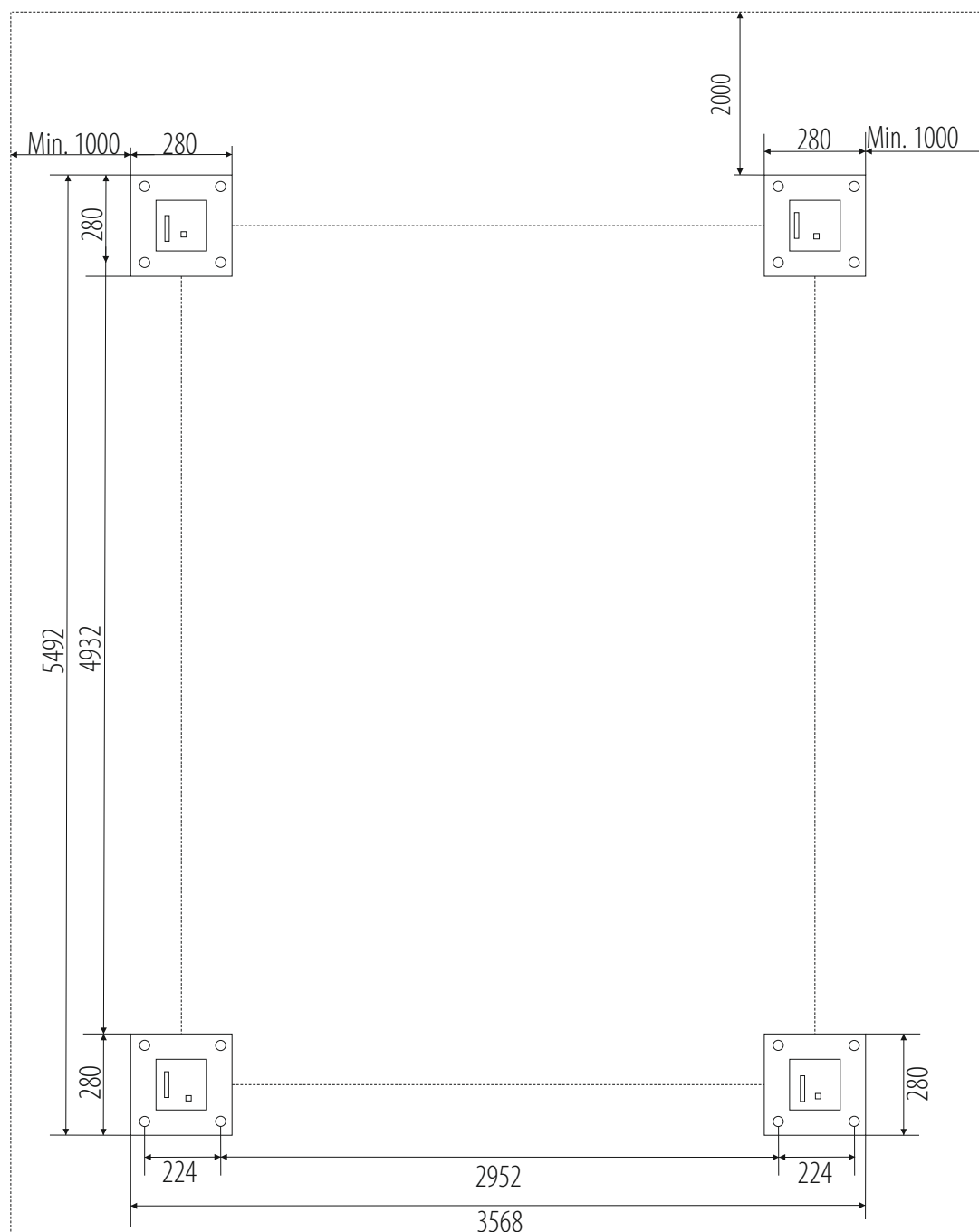
axle jack 2,5T with manual hydraulic pump.



Electrohydraulic lift for wheel alignment • platforms with space for turntables and discharge plates • mechanical height lock released manually • regulated one platform position • perfectly protected hydraulic actuator • galvanised ropes with preliminary stretching • rope wheels with a large diameter • the lift lock in case of loosening or rope breakag • lift steering with safe voltage 24V • safety devices in compliance with the norm EN1493:2010



PO500N



INSTALLATION REQUIREMENTS:



Concrete class: B25 or C20 / 25 with a minimum mounting area: 5992x4068x300mm ♦ Acceptable floor imbalance: +/- 5mm, floor execution: 3 weeks before assembly ♦ Mounting anchors: mechanical M12 / 150 mm 16 pieces or chemical M16 / 250mm ♦ Hydraulic oil: HL32, 18.0l ♦ Power supply: 5x2.5mm cable to the place of assembly ♦ Pneumatic supply: dry and lubricant air, min. 6 bar (max. 8 bar) ♦ Current protection: min. 32A with 3-phase 400V / 50Hz power supply.

Installation allowed only in closed areas ♦ prohibition of using reinforcement 20 cm from the top thicker than 4mm² ♦ assembly for chemical anchors for an additional fee (submit in advance, preferably when setting the date of assembly) ♦ All connections, with particular reference to electrical connections, they must be made by authorized persons ♦ The installation must remain carried out by qualified personnel according to the rules attached in this building plan ♦ In the case of assembly by Nortec or its authorized service center, the lift must be on solid ground.



Scan and see more!

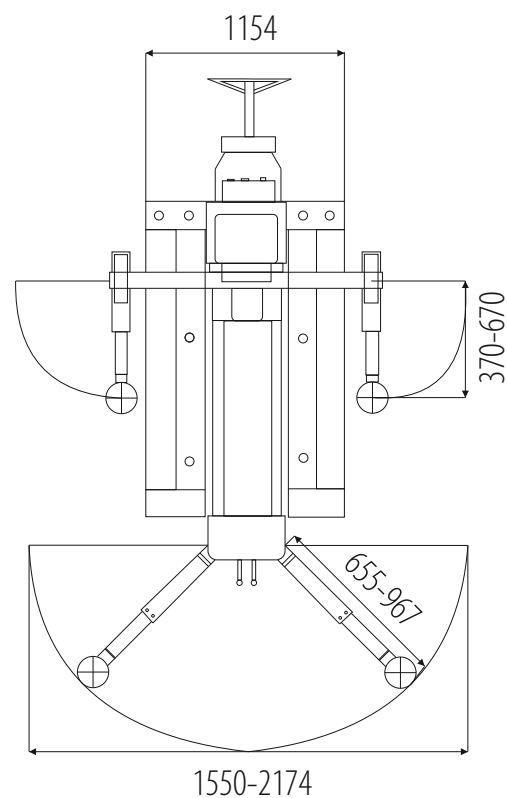
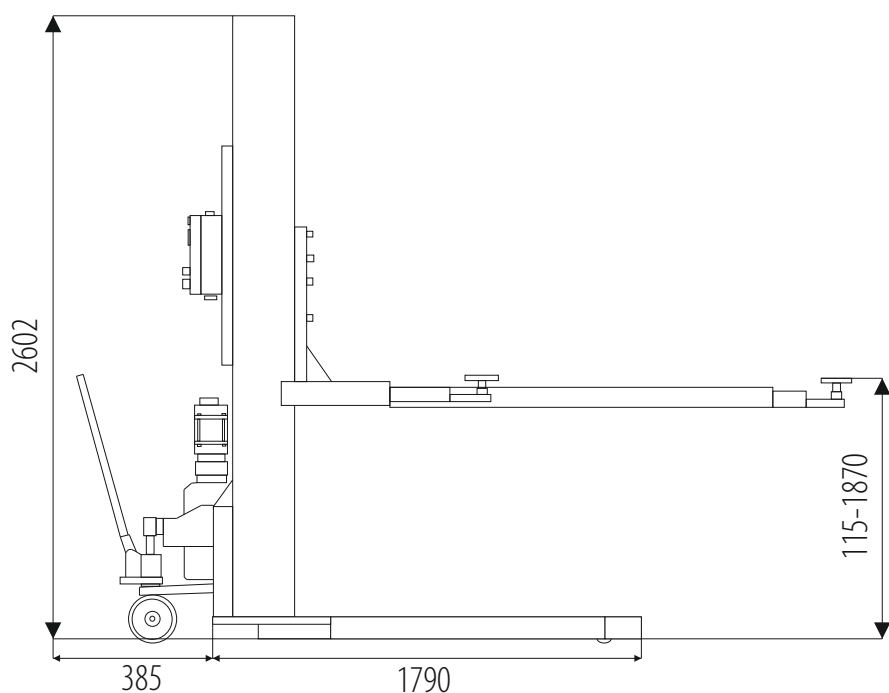
 You **Tube**

PJ2500M



CAPACITY:	2500 kg
POWER SUPPLY:	400V/50Hz
MOTOR POWER:	1,5 kW
LIFTING HEIGHT:	115-1870 mm
TOTAL HEIGHT:	2602 mm
IP CLASS:	54
OIL PRESSURE:	18 MPa
NOISE LEVEL:	<75 dB
WEIGHT:	900 kg

Mobile electrohydraulic lift • electro-mechanical height lock electrically released • automatic arm lock during lifting • height adapters with smooth support adjustment • possibility work outside • safety devices in compliance with the norm EN1493:2010



WC2130



POWER SUPPLY:	230V/50Hz
PNEUMATIC SUPPLY:	8-10 bar
MOTOR POWER:	350 W
SHAFT DIAMETER:	40 mm
MAX. WHEEL WEIGHT:	200 kg
MAX. WHEEL DIAMETER:	10" – 32"
RIM WIDTH:	1,5" – 20"
ACCURACY:	± 1g / ± 10 g ciężarowe
WEIGHT:	320 kg
NOISE LEVEL:	<70 dB (A)

Balancing machine designed for balancing truck, light truck and passenger wheels • measuring the distance from the balancer with a measuring cup, diameter and width using a caliper • automatic wheel braking • automatic START / STOP activated by a protective hood • autodiagnosics • autocalibration, the ability to change units to inches and ounces • included a range cones and flange for balancing wheels of different diameter and rim structure • pneumatic wheel lifting • programs: static, dynamic, ALU.

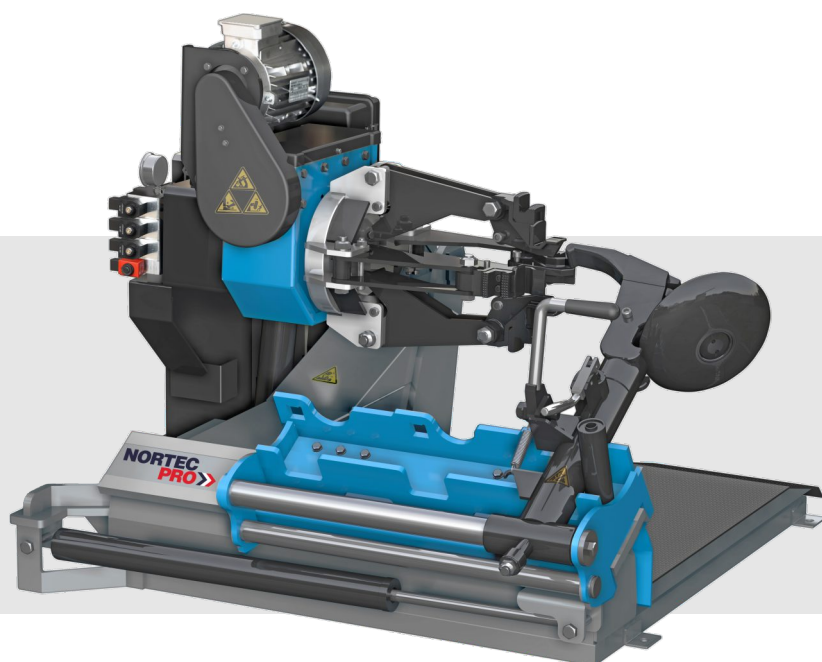
CONTROL BOX



STANDARD EQUIPMENT



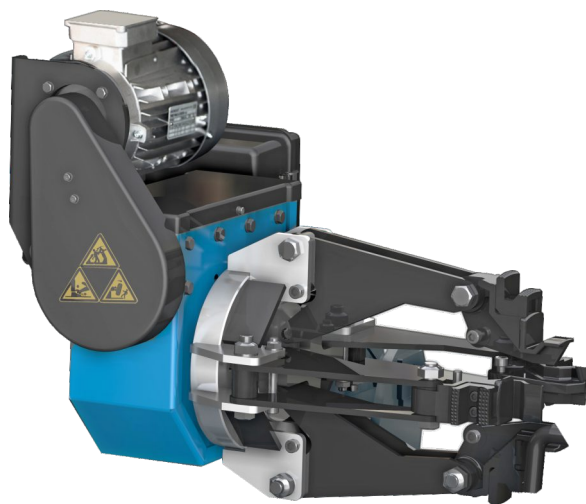
MC605



PNEUMATIC SUPPLY:	400V/50Hz, 3 phase
SPINDLE'S MOTOR POWER:	1,3 kW
PUMP'S MOTOR POWER:	1,5 kW
WORKING PRESSURE:	130 bar \pm 10%
MAX. RIM DIAMETER:	13" - 27"
MAX. WHEEL DIAMETER:	1600 mm
MAX. WHEEL WIDTH:	780 mm
MAX. WHEEL WEIGHT:	1500 kg
NOISE LEVEL:	<70 dB
WEIGHT:	560 kg

Designed for mounting and dismantling tubeless tires ♦ for truck wheels, buses, agricultural and construction machines ♦ plate breaker and claw placed on a rotary head, allowing for quick tool change ♦ specially profiled plate breaker allows for efficient dismantling the tire without risk of damage ♦ movable platform for quick and precise wheel alignment ♦ safe control voltage (24V) eliminates the risk of electric shock ♦ electrohydraulic assembly machine with mobile wired control unit ♦ 4-jaw self-centering chuck ♦ two speeds of gripper rotation

FOUR-POINT HYDRAULIC HANDLE

PLATE AND NAIL PLATE
ON THE ROTARY HEAD

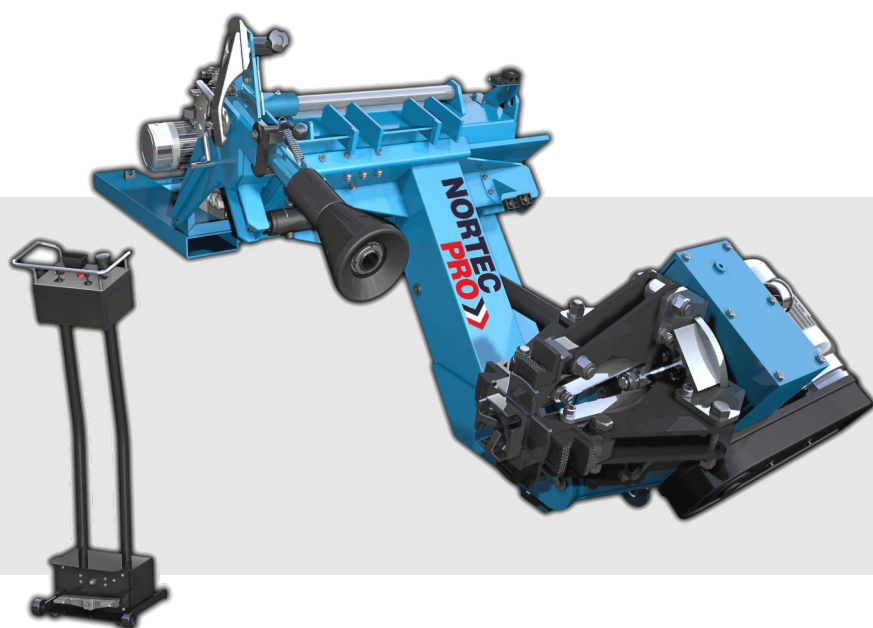
MOBILE WIRED CONTROL UNIT



4X JACK COVER FOR ALUMINUM RIMS (OPTIONAL)

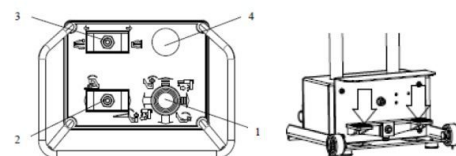


MC605M



POWER SUPPLY:	400V/50Hz, 3 phase
SPINDLE'S MOTOR POWER:	1,5 kW
PUMP'S MOTOR POWER:	1,1 kW
WORKING PRESSURE:	130 bar \pm 10%
MAX. RIM DIAMETER:	13" - 26"
MAX. WHEEL DIAMETER:	1300 mm
MAX. WHEEL WIDTH:	600 mm
MAX. WHEEL WEIGHT:	750 kg
NOISE LEVEL:	<70 dB
WEIGHT:	450 kg

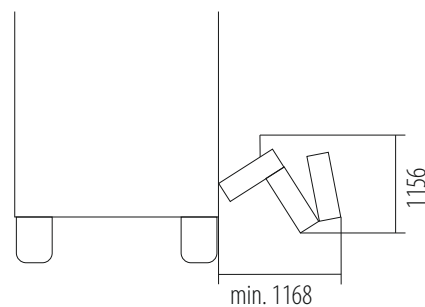
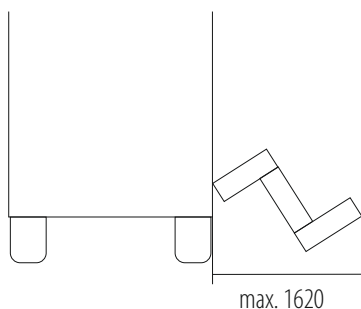
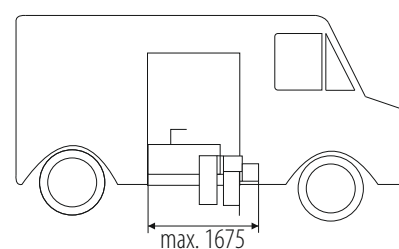
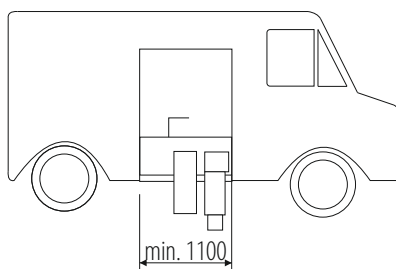
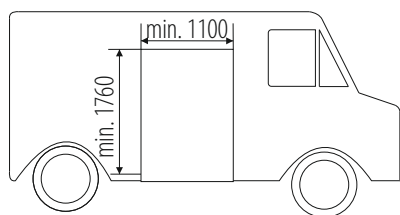
Mobile electrohydraulic assembly ♦ mobile wired control unit mounting on a van ♦ 4-jaw self-centering gripper ♦ knocking roll and claw included



STERING

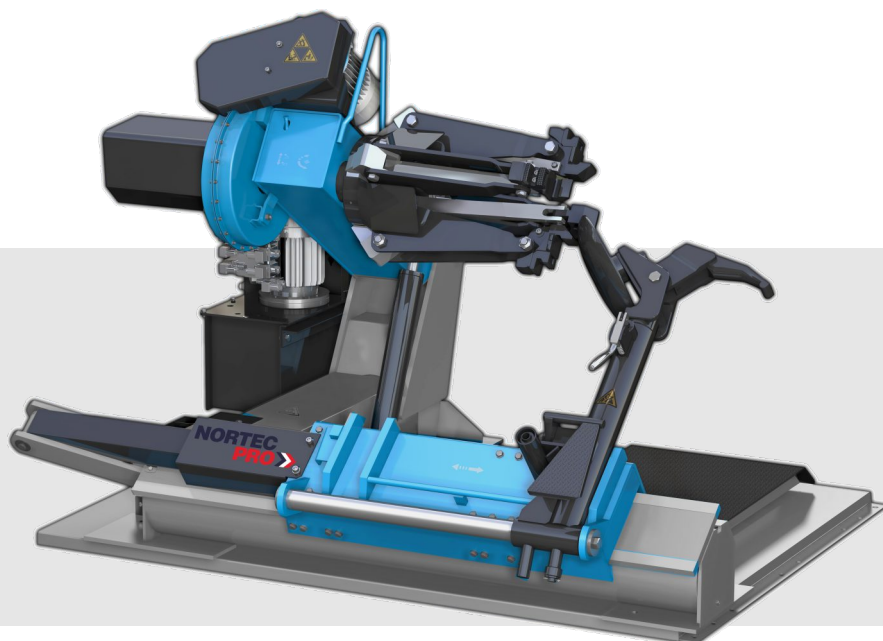
1. up/down - move the spindle
2. assembly/disassembly of the device
3. open/close the spindle
4. safety switch
5. pedals controlling rotation of the spindle

ASSEMBLY REQUIERMENTS



electric power generator 400V/50Hz
 max. assembly height from the floor: 770mm
 need of fixing to the truck floor using at least 4 screws
 assembly possible from the side or the back of a truck
 electrical hedge: 16A

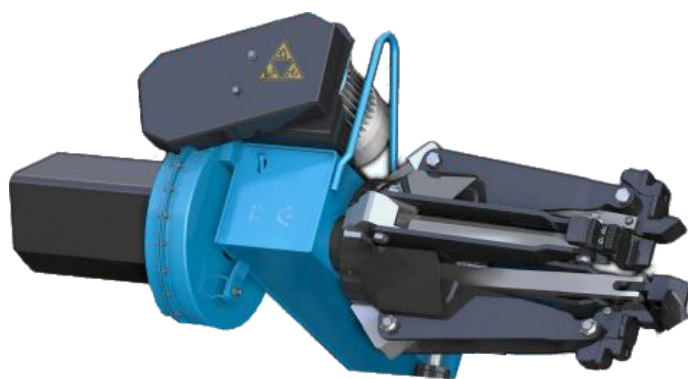
MC705



POWER SUPPLY:	400V/50Hz, 3 phase
SPINDLE'S MOTOR POWER:	1,3 kW / 1,8 kW
PUMP'S MOTOR POWER:	1,1 kW
WORKING PRESSURE:	130 bar ± 10%
MAX. RIM DIAMETER:	14" - 56"
MAX. WHEEL DIAMETER:	2300 mm
MAX. WHEEL WIDTH:	1065 mm
MAX. WHEEL WEIGHT:	1500 kg
NOISE LEVEL:	<70 dB
WEIGHT:	770 kg

4-jaw self-centering gripper ♦ mobile wired control unit ♦ two speeds of gripper rotation ♦ designed for mounting and dismounting of tubeless and tubeless tires ♦ for truck wheels, buses, agricultural and construction machines ♦ plate breaker and claw placed on a rotating head allowing for a quick tool change ♦ specially profiled plate breaker allows for efficient disassembly of the tire without risk of damage ♦ mobile platform for quick and precise wheel alignment ♦ safe control voltage (24V) eliminates the risk electric shock ♦ controlling the device from a mobile column ♦ floor supporting structure.

FOUR-POINT HYDRAULIC HANDLE



PLAYER AND NAIL PLATE ON THE ROTARY HEAD



MOBILE WIRED CONTROL UNIT



4X JACK COVER FOR ALUMINUM RIMS (OPTIONAL)



HDY2500

CAPACITY:	25000 Kg
LIFTING HEIGHT:	1750 mm
MINIMUM HEIGHT:	350 mm
LENGTH AND TOTAL WIDTH:	12400 mm * 2680 mm
SINGLE PLATFORM WIDTH:	750 mm
TOTAL LIFTING TIME:	≤ 120 sec
POWER SUPPLY:	230V 2 FAZY LUB 400V 3 FAZY
MOTOR POWER:	7.5 Kw
MAXIMUM WORKING PRESSURE:	18 Mpa

NORTEC HDY2500 is intended for installation, repair, maintenance, oil change, washing and other vehicle services.



NORTEC HDY2500 adopts unique hydraulic vertical lifting system and advanced high-precision balancing control device, to ensure perfect synchronization of the hydraulic cylinders and ultimately ensure the smooth up and down of lifts. NORTEC Platform Lift is designed for the assembly, repair, maintenance, oil-change, washing and other services of various commercial vehicles, such as urban public traffic vehicles, passenger coaches and heavy duty trucks etc.

FEATURES:

Unique Synchronization System:

It ensures smooth up and down of the lift even when the two lifting platform are unevenly loaded.

Human Engineering:

Two lifting platforms function as the carrying agency and each lifting platform is equipped with two cylinders, one at each end. The lift also includes an independent electrical control system, a hydraulic power unit as well as an emergency descent device in case of power failure.

Unique Structure:

The Y-type lifting arm greatly enhances bearing rigidity of the platform and simplifies overall structure of the lift. Furthermore, the Y-type spares more repair space under the platform, thus ensuring free passage of servicing equipments underneath.

High Cost-effectiveness:

The electronic and hydraulic control systems share on movable control box, which greatly compacts structural allocation and facilitates daily operation. The lift itself is easy to assemble and disassemble, and can be re-installed easily during factory relocation.

Safety Assurance:

The lift has double safety guarantee under load status, i.e. hydraulic support and mechanical lock, it also designed with limit switch, so that it can stop in no time when the ultimate position is reached. In case of any unexpected power failure, the lift can be descended simply by turning the manual lower knob. In addition, the lift is also equipped with overload over-flow protection device.

Panel Lcd



Jednostka sterująca



ASSEMBLY REQUIREMENTS:

Concrete strength ≥ 15 Mpa; gradient $\leq 1:200$; levelness differences ≤ 10 mm; make sure the equipment is away from combustible or explosive materials during both indoor and outdoor use.



WASTE OIL CHANGER

AIR PRESSURE (7-8 bar)
 INCLUDES 6 SUCTION PROBES (METAL AND FLEXIBLE)
 OIL LEVEL INDICATOR
 EMPTYING OF PRESSURE OR GRAVITY

MODEL : CAPACITY
 99291 : 30L
 99294 : 65L
 99293 : 90L



WASTE OIL CHANGER WITH CHAMBER

AIR PRESSURE (7-8 bar)
 INCLUDES 6 SUCTION PROBES (METAL AND FLEXIBLE)
 EMPTYING PRESSURE (max. 1 bar)
 CAPACITY OF THE CONTROL TANK: 8 L

MODEL : CAPACITY
 2365 : 65L
 10925 : 90L



WASTE OIL DRAINER

OIL LEVEL INDICATOR
 EMPTYING OF PRESSURE (max. 1 bar)
 CAPACITY OF THE SINK: 18L
 ADJUSTABLE HEIGHT OF SINK: 1150 mm - 1850 mm

MODEL : CAPACITY
 2065 : 65L
 10950 : 90L



WASTE OIL DRAINER

AIR PRESSURE (7-8 bar)
 INCLUDES 6 SUCTION PROBES (METAL AND FLEXIBLE)
 OIL LEVEL INDICATOR
 EMPTYING OF PRESSURE (max. 1 bar)
 CAPACITY OF THE SINK: 18L
 TANK CAPACITY: 90L

MODEL : ZW9065



WASTE OIL DRAINER/CHANGER WITH CHAMBER

AIR PRESSURE (7-8 bar)
 INCLUDES 6 SUCTION PROBES (METAL AND FLEXIBLE)
 OIL LEVEL INDICATOR
 EMPTYING OF PRESSURE (max. 1 bar)
 CAPACITY OF THE CONTROL TANK: 8L
 CAPACITY OF THE SINK: 18L
 TANK CAPACITY: 90L

MODEL : 10900





Nortec Sp. z o.o.
Rabowice k / Poznania
ul.Świerkowa 32
62-020 Rabowice

e-mail:biuro@nortec-com.pl

Mboile phone: +48 607-580-361

Infoline: +48 801-521-522

www.nortec-pro.com